

GFP antibody

Cat. No. GTX113617

Host	Rabbit
Clonality	Polyclonal
Isotype	IgG
Applications	WB, ICC/IF, IHC-P, IHC-Fr, IHC-Wm, IP, Dot, ELISA, IHC
Reactivity	Species independent

References (189)

★★★★★ Review (8)

Package

100 µl, 25 µl

PRODUCT

Summary

GFP antibody recognizes the green fluorescent protein (GFP), a fluorophore in widespread use in biomedical research. GFP fluorescence allows real-time study of physiological processes involving fusion proteins or GFP-expressing cells. This antibody also detects other GFP variants, including EGFP and YFP, but not red fluorescent protein (RFP).

Applications

Application Note

*Optimal dilutions/concentrations should be determined by the researcher.

Suggested dilution	Recommended dilution
WB	1:5000-1:20000
ICC/IF	1:1000-1:5000
IHC-P	Assay dependent
IHC-Fr	Assay dependent
IHC-Wm	1:100-1:500
IP	1:100-1:500
Dot	Assay dependent
ELISA	Assay dependent
IHC	Assay dependent

Not tested in other applications.

Calculated MW 29 kDa. ([Note](#))

Product Note This antibody reacts with GFP variants including GFP, EGFP, and YFP.

Properties

Form	Liquid
Buffer	PBS, 1% BSA, 20% Glycerol
Preservative	0.025% ProClin 300



For full product information, images and publications, please visit our [website](#).

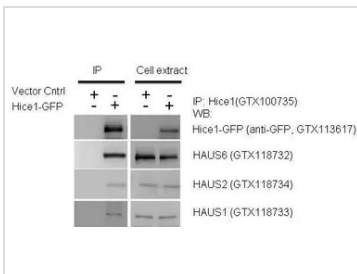
Storage	Store as concentrated solution. Centrifuge briefly prior to opening vial. For short-term storage (1-2 weeks), store at 4°C. For long-term storage, aliquot and store at -20°C or below. Avoid multiple freeze-thaw cycles.
Concentration	0.17 mg/ml (Please refer to the vial label for the specific concentration.)
Immunogen	Full length GFP recombinant protein
Purification	Purified by antigen-affinity chromatography.
Conjugation	Unconjugated
Note	<p>For laboratory research use only. Not for any clinical, therapeutic, or diagnostic use in humans or animals. Not for animal or human consumption.</p> <p>Purchasers shall not, and agree not to enable third parties to, analyze, copy, reverse engineer or otherwise attempt to determine the structure or sequence of the product.</p>

DATA IMAGES



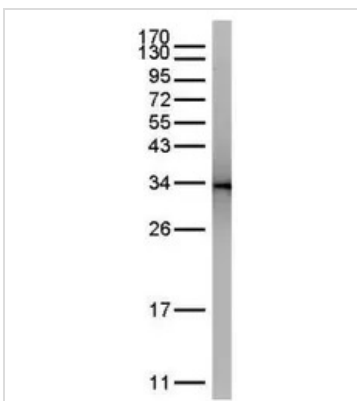
GTX113617 IHC-Wm Image

Immunohistochemical analysis (whole mount) of transgenic zebrafish embryo (fixed with ice-cold acetone), using GFP(GTX113617) antibody at 1:200 dilution.



GTX113617 WB Image

IP-WB assay to show that Hice1 (GTX113617) co-immunoprecipitated with other Augmin components HAUS6 (GTX118732), HAUS2 (GTX118734) and HAUS1 (GTX118733) in U2OS cells. The HRP-conjugated anti-rabbit IgG antibody (GTX213110-01) was used to detect the primary antibody.



GTX113617 IP Image

GFP was immunoprecipitated from bacterial GFP-expressing lysate using 1 ug of anti-GFP antibody (GTX113617).

The precipitated GFP was detected by GTX113617 diluted at 1:15000.



For full product information, images and publications, please visit our [website](https://www.genetex.com).