

# Apolipoprotein H antibody [N1C2]

**Cat. No. GTX113627**

|                     |                   |
|---------------------|-------------------|
| <b>Host</b>         | Rabbit            |
| <b>Clonality</b>    | Polyclonal        |
| <b>Isotype</b>      | IgG               |
| <b>Applications</b> | WB, IHC-P         |
| <b>Reactivity</b>   | Human, Mouse, Rat |

**Package**  
100 µl, 25 µl

## Applications

### Application Note

\*Optimal dilutions/concentrations should be determined by the researcher.

| Suggested dilution | Recommended dilution |
|--------------------|----------------------|
| WB                 | 1:500-1:3000         |
| IHC-P              | Assay dependent      |

Not tested in other applications.

**Calculated MW** 38 kDa. ( [Note](#) )

## Properties

|                      |  |
|----------------------|--|
| <b>Form</b>          | Liquid   |
| <b>Buffer</b>        | 0.1M Tris, 0.1M Glycine, 20% Glycerol  |
| <b>Preservative</b>  | 0.01% Thimerosal   |
| <b>Storage</b>       | Store as concentrated solution. Centrifuge briefly prior to opening vial. For short-term storage (1-2 weeks), store at 4°C. For long-term storage, aliquot and store at -20°C or below. Avoid multiple freeze-thaw cycles. |
| <b>Concentration</b> | 1 mg/ml (Please refer to the vial label for the specific concentration.)   |
| <b>Immunogen</b>     | Recombinant protein encompassing a sequence within the center region of human Apolipoprotein H. The exact sequence is proprietary.   |
| <b>Purification</b>  | Purified by antigen-affinity chromatography.   |
| <b>Conjugation</b>   | Unconjugated   |

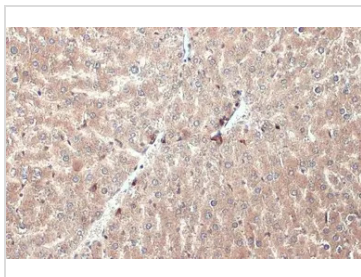
### Note

For laboratory research use only. Not for any clinical, therapeutic, or diagnostic use in humans or animals. Not for animal or human consumption.

Purchasers shall not, and agree not to enable third parties to, analyze, copy, reverse engineer or otherwise attempt to determine the structure or sequence of the product.



For full product information, images and publications, please visit our [website](#).

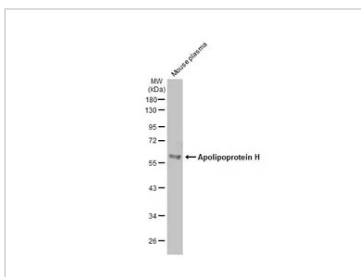
**DATA IMAGES**

**GTX113627 IHC-P Image**

Apolipoprotein H antibody [N1C2] detects Apolipoprotein H protein at cytoplasm by immunohistochemical analysis.

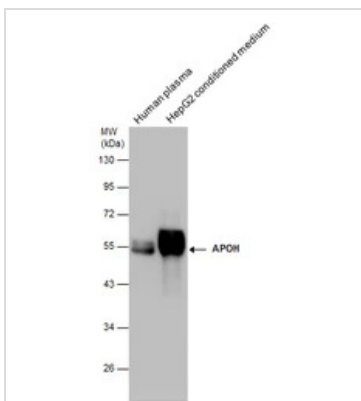
Sample: Paraffin-embedded mouse liver.

Apolipoprotein H stained by Apolipoprotein H antibody [N1C2] (GTX113627) diluted at 1:500.

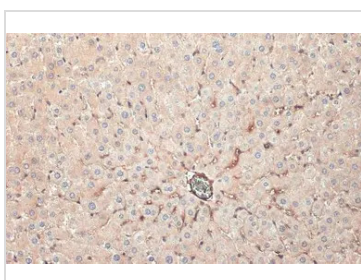
Antigen Retrieval: Citrate buffer, pH 6.0, 15 min


**GTX113627 WB Image**

Mouse tissue extract (50 µg) was separated by 10% SDS-PAGE, and the membrane was blotted with Apolipoprotein H antibody [N1C2] (GTX113627) diluted at 1:1000. The HRP-conjugated anti-rabbit IgG antibody (GTX213110-01) was used to detect the primary antibody.


**GTX113627 WB Image**

APOH antibody detects APOH protein by western blot analysis. Various whole cell extracts (30 µg) were separated by 10% SDS-PAGE, and the membrane was blotted with APOH antibody (GTX113627) diluted at 1:1000.


**GTX113627 IHC-P Image**

Apolipoprotein H antibody [N1C2] detects secreted Apolipoprotein H protein by immunohistochemical analysis.

Sample: Paraffin-embedded rat liver.

Apolipoprotein H stained by Apolipoprotein H antibody [N1C2] (GTX113627) diluted at 1:500.

Antigen Retrieval: Citrate buffer, pH 6.0, 15 min



For full product information, images and publications, please visit our [website](https://www.genetex.com).