

Apolipoprotein H antibody [N1C2]

Cat. No. GTX113627

Host	Rabbit
Clonality	Polyclonal
Isotype	IgG
Applications	WB, IHC-P
Reactivity	Human, Mouse, Rat

Package
100 µl, 25 µl

Applications

Application Note

*Optimal dilutions/concentrations should be determined by the researcher.

Suggested dilution	Recommended dilution
WB	1:500-1:3000
IHC-P	Assay dependent

Not tested in other applications.

Calculated MW 38 kDa. ([Note](#))

Properties

Form	Liquid
Buffer	0.1M Tris, 0.1M Glycine, 20% Glycerol
Preservative	0.01% Thimerosal
Storage	Store as concentrated solution. Centrifuge briefly prior to opening vial. For short-term storage (1-2 weeks), store at 4°C. For long-term storage, aliquot and store at -20°C or below. Avoid multiple freeze-thaw cycles.
Concentration	1 mg/ml (Please refer to the vial label for the specific concentration.)
Immunogen	Recombinant protein encompassing a sequence within the center region of human Apolipoprotein H. The exact sequence is proprietary.
Purification	Purified by antigen-affinity chromatography.
Conjugation	Unconjugated

Note

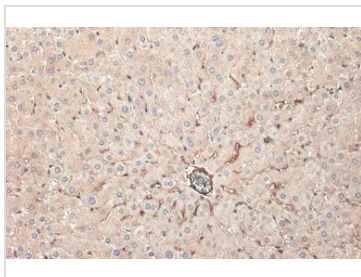
For laboratory research use only. Not for any clinical, therapeutic, or diagnostic use in humans or animals. Not for animal or human consumption.

Purchasers shall not, and agree not to enable third parties to, analyze, copy, reverse engineer or otherwise attempt to determine the structure or sequence of the product.



For full product information, images and publications, please visit our [website](#).

DATA IMAGES



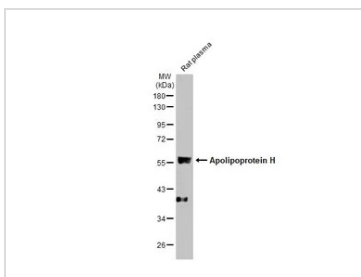
GTX113627 IHC-P Image

Apolipoprotein H antibody [N1C2] detects secreted Apolipoprotein H protein by immunohistochemical analysis.

Sample: Paraffin-embedded rat liver.

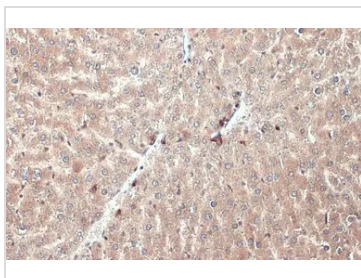
Apolipoprotein H stained by Apolipoprotein H antibody [N1C2] (GTX113627) diluted at 1:500.

Antigen Retrieval: Citrate buffer, pH 6.0, 15 min



GTX113627 WB Image

Rat tissue extract (50 µg) was separated by 10% SDS-PAGE, and the membrane was blotted with Apolipoprotein H antibody [N1C2] (GTX113627) diluted at 1:1000. The HRP-conjugated anti-rabbit IgG antibody (GTX213110-01) was used to detect the primary antibody.



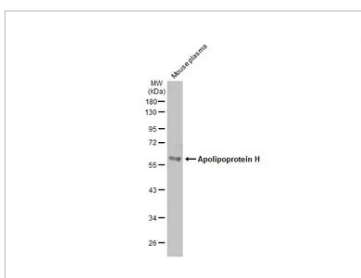
GTX113627 IHC-P Image

Apolipoprotein H antibody [N1C2] detects Apolipoprotein H protein at cytoplasm by immunohistochemical analysis.

Sample: Paraffin-embedded mouse liver.

Apolipoprotein H stained by Apolipoprotein H antibody [N1C2] (GTX113627) diluted at 1:500.

Antigen Retrieval: Citrate buffer, pH 6.0, 15 min



GTX113627 WB Image

Mouse tissue extract (50 µg) was separated by 10% SDS-PAGE, and the membrane was blotted with Apolipoprotein H antibody [N1C2] (GTX113627) diluted at 1:1000. The HRP-conjugated anti-rabbit IgG antibody (GTX213110-01) was used to detect the primary antibody.



For full product information, images and publications, please visit our [website](https://www.genetex.com).