

## ASL antibody

**Cat. No. GTX113629**

<b>Host</b>	Rabbit
<b>Clonality</b>	Polyclonal
<b>Isotype</b>	IgG
<b>Applications</b>	WB, ICC/IF, IHC-P
<b>Reactivity</b>	Human, Mouse

References ( 2 )

Package

100 µl, 25 µl

## Applications

**Application Note**

\*Optimal dilutions/concentrations should be determined by the researcher.

Suggested dilution	Recommended dilution
WB	1:500-1:3000
ICC/IF	1:100-1:1000
IHC-P	1:100-1:1000

Not tested in other applications.

**Calculated MW** 52 kDa. ( [Note](#) )

## Properties

<b>Form</b>	Liquid
<b>Buffer</b>	PBS, 20% Glycerol
<b>Preservative</b>	0.025% ProClin 300
<b>Storage</b>	Store as concentrated solution. Centrifuge briefly prior to opening vial. For short-term storage (1-2 weeks), store at 4°C. For long-term storage, aliquot and store at -20°C or below. Avoid multiple freeze-thaw cycles.
<b>Concentration</b>	0.78 mg/ml (Please refer to the vial label for the specific concentration.)
<b>Immunogen</b>	Recombinant protein encompassing a sequence within the center region of human ASL. The exact sequence is proprietary.
<b>Purification</b>	Purified by antigen-affinity chromatography.
<b>Conjugation</b>	Unconjugated

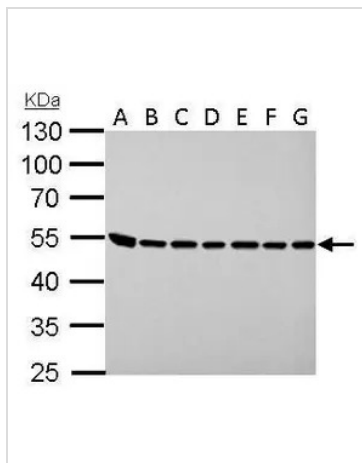
**Note**

For laboratory research use only. Not for any clinical, therapeutic, or diagnostic use in humans or animals. Not for animal or human consumption.

Purchasers shall not, and agree not to enable third parties to, analyze, copy, reverse engineer or otherwise attempt to determine the structure or sequence of the product.

For full product information, images and publications, please visit our [website](#).

## DATA IMAGES

**GTX113629 WB Image**

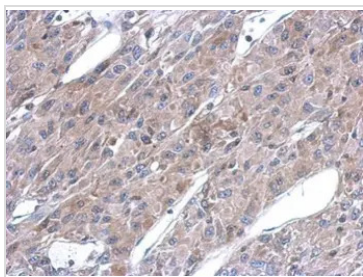
ASL antibody detects ASL protein by western blot analysis.

- A. 30  $\mu$ g Neuro2A whole lysate/extract
- B. 30  $\mu$ g GL261 whole cell lysate/extract
- C. 30  $\mu$ g C8D30 whole cell lysate/extract
- D. 30  $\mu$ g NIH-3T3 whole cell lysate/extract
- E. 30  $\mu$ g BCL-1 whole cell lysate/extract
- F. 30  $\mu$ g Raw264.7 whole cell lysate/extract
- G. 30  $\mu$ g C2C12 whole cell lysate/extract

10% SDS-PAGE

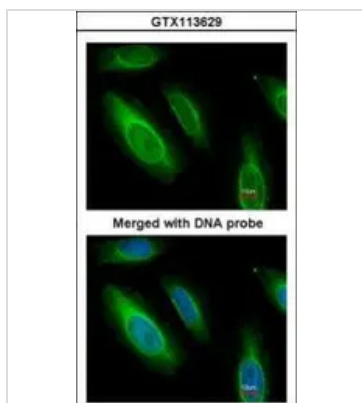
ASL antibody (GTX113629) dilution: 1:1000

The HRP-conjugated anti-rabbit IgG antibody (GTX213110-01) was used to detect the primary antibody.

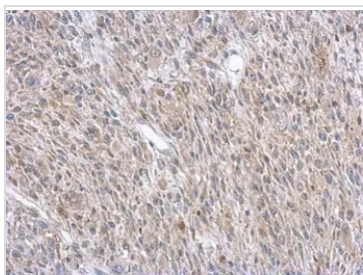
**GTX113629 IHC-P Image**

Immunohistochemical analysis of paraffin-embedded U87 xenograft, using ASL(GTX113629) antibody at 1:500 dilution.

Antigen Retrieval: Trilogy™ (EDTA based, pH 8.0) buffer, 15min

**GTX113629 ICC/IF Image**

Immunofluorescence analysis of paraformaldehyde-fixed HeLa, using Argininosuccinate Lyase(GTX113629) antibody at 1:200 dilution.

**GTX113629 IHC-P Image**

Immunohistochemical analysis of paraffin-embedded C2C12 xenograft, using ASL(GTX113629) antibody at 1:500 dilution.

Antigen Retrieval: Trilogy™ (EDTA based, pH 8.0) buffer, 15min



For full product information, images and publications, please visit our [website](#).