

SR-BI antibody

Cat. No. GTX113645

Host	Rabbit
Clonality	Polyclonal
Isotype	IgG
Applications	WB, ICC/IF, IHC-P
Reactivity	Human, Mouse, Rat

References (3)

Package

100 µl, 25 µl

Applications

Application Note

*Optimal dilutions/concentrations should be determined by the researcher.

Suggested dilution	Recommended dilution
WB	1:500-1:3000
ICC/IF	1:100-1:1000
IHC-P	1:100-1:1000

Not tested in other applications.

Calculated MW 61 kDa. ([Note](#))

Properties

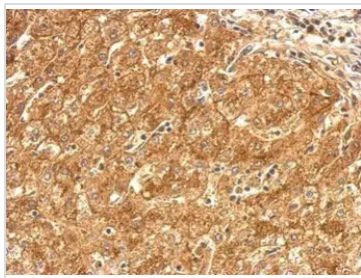
Form	Liquid
Buffer	PBS, 1% BSA, 20% Glycerol
Preservative	0.025% ProClin 300
Storage	Store as concentrated solution. Centrifuge briefly prior to opening vial. For short-term storage (1-2 weeks), store at 4°C. For long-term storage, aliquot and store at -20°C or below. Avoid multiple freeze-thaw cycles.
Concentration	0.12 mg/ml (Please refer to the vial label for the specific concentration.)
Immunogen	Recombinant protein encompassing a sequence within the C-terminus region of human SR-BI. The exact sequence is proprietary.
Purification	Purified by antigen-affinity chromatography.
Conjugation	Unconjugated

Note

For laboratory research use only. Not for any clinical, therapeutic, or diagnostic use in humans or animals. Not for animal or human consumption.

Purchasers shall not, and agree not to enable third parties to, analyze, copy, reverse engineer or otherwise attempt to determine the structure or sequence of the product.

For full product information, images and publications, please visit our [website](#).

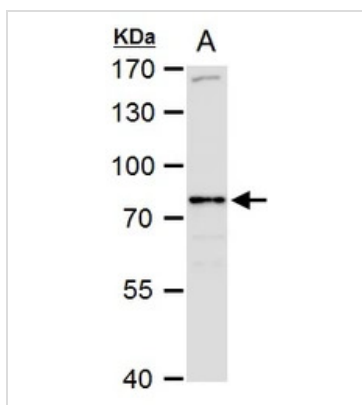
DATA IMAGES

GTX113645 IHC-P Image

SR-BI antibody detects SR-BI protein at cytosol and weak membrane on human hepatoma by immunohistochemical analysis.

Sample: Paraffin-embedded hepatoma.

SR-BI antibody (GTX113645) dilution: 1:500.

Antigen Retrieval: Trilogy™ (EDTA based, pH 8.0) buffer, 15min


GTX113645 WB Image

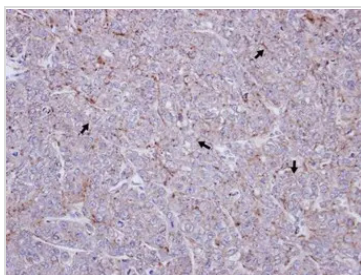
SR-BI antibody detects SR-BI protein by western blot analysis.

A. 50 µg rat liver extract

7.5% SDS-PAGE

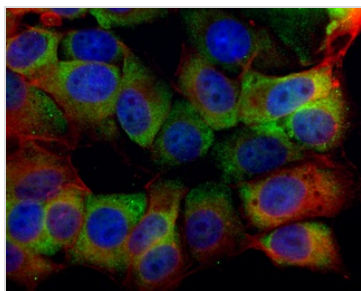
SR-BI antibody (GTX113645) dilution: 1:1000

The HRP-conjugated anti-rabbit IgG antibody (GTX213110-01) was used to detect the primary antibody.


GTX113645 IHC-P Image

Immunohistochemical analysis of paraffin-embedded DLD-1 xenograft, using SR-BI(GTX113645) antibody at 1:100 dilution.

Antigen Retrieval: Trilogy™ (EDTA based, pH 8.0) buffer, 15min


GTX113645 ICC/IF Image

SR-BI antibody detects SR-BI protein at cytoplasm by immunofluorescent analysis.

Sample: MCF7 cells were fixed in 4% paraformaldehyde at RT for 15 min.

Green: SR-BI protein stained by SR-BI antibody (GTX113645) diluted at 1:500.

Red: phalloidin, a cytoskeleton marker, stained by phalloidin (invitrogen, A12380) diluted at 1:200.

Blue: Hoechst 33342 staining.



For full product information, images and publications, please visit our [website](https://www.genetex.com).