

## IRE1 alpha antibody [N1N2], N-term

**Cat. No. GTX113682**

<b>Host</b>	Rabbit
<b>Clonality</b>	Polyclonal
<b>Isotype</b>	IgG
<b>Applications</b>	WB, IHC-P, IP
<b>Reactivity</b>	Human, Rat, Chicken

References ( 2 )

Package

100 µl, 25 µl

## Applications

**Application Note**

\*Optimal dilutions/concentrations should be determined by the researcher.

Suggested dilution	Recommended dilution
WB	1:500-1:3000
IHC-P	Assay dependent
IP	Assay dependent

Not tested in other applications.

**Calculated MW** 110 kDa. ([Note](#))

## Properties

<b>Form</b>	Liquid
<b>Buffer</b>	0.1M Tris, 0.1M Glycine, 20% Glycerol
<b>Preservative</b>	0.01% Thimerosal
<b>Storage</b>	Store as concentrated solution. Centrifuge briefly prior to opening vial. For short-term storage (1-2 weeks), store at 4°C. For long-term storage, aliquot and store at -20°C or below. Avoid multiple freeze-thaw cycles.
<b>Concentration</b>	0.5 mg/ml (Please refer to the vial label for the specific concentration.)
<b>Immunogen</b>	Recombinant protein encompassing a sequence within the N-terminus region of human IRE1 alpha. The exact sequence is proprietary.
<b>Purification</b>	Purified by antigen-affinity chromatography.
<b>Conjugation</b>	Unconjugated

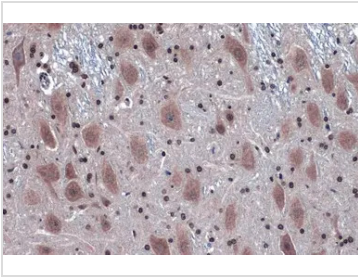
**Note**

For laboratory research use only. Not for any clinical, therapeutic, or diagnostic use in humans or animals. Not for animal or human consumption.

Purchasers shall not, and agree not to enable third parties to, analyze, copy, reverse engineer or otherwise attempt to determine the structure or sequence of the product.

For full product information, images and publications, please visit our [website](#).

## DATA IMAGES

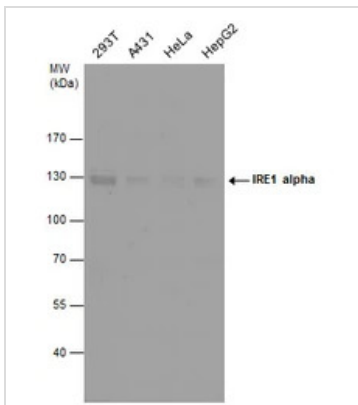
**GTX113682 IHC-P Image**

IRE1 alpha antibody [N1N2], N-term detects IRE1 alpha protein at cytoplasm by immunohistochemical analysis.

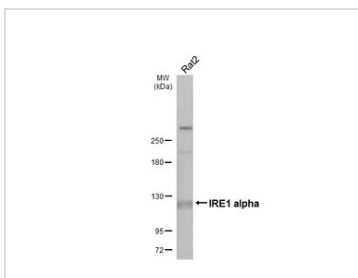
Sample: Paraffin-embedded rat brain.

IRE1 alpha stained by IRE1 alpha antibody [N1N2], N-term (GTX113682) diluted at 1:500.

Antigen Retrieval: Citrate buffer, pH 6.0, 15 min

**GTX113682 WB Image**

IRE1 alpha antibody detects IRE1 alpha protein by western blot analysis. Various whole cell extracts (30 µg) were separated by 7.5% SDS-PAGE, and the membrane was blotted with IRE1 alpha antibody (GTX113682) diluted by 1:1000.

**GTX113682 WB Image**

Whole cell extract (30 µg) was separated by 5% SDS-PAGE, and the membrane was blotted with IRE1 alpha antibody [N1N2], N-term (GTX113682) diluted at 1:1000. The HRP-conjugated anti-rabbit IgG antibody (GTX213110-01) was used to detect the primary antibody, and the signal was developed with Trident femto Western HRP Substrate.



For full product information, images and publications, please visit our [website](https://www.genetex.com).