

Fibrillarin antibody

Cat. No. GTX113684

Host	Rabbit
Clonality	Polyclonal
Isotype	IgG
Applications	WB, ICC/IF, IHC-P
Reactivity	Human, Mouse, Rat

 Review (1)Package
100 µl, 25 µl

Applications

Application Note

*Optimal dilutions/concentrations should be determined by the researcher.

Suggested dilution	Recommended dilution
WB	1:500-1:3000
ICC/IF	1:100-1:1000
IHC-P	1:100-1:1000

Not tested in other applications.

Calculated MW 34 kDa. ([Note](#))

Properties

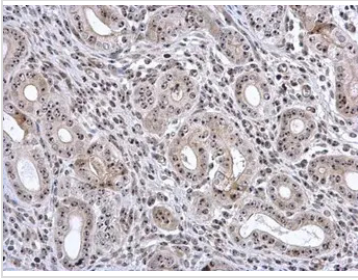
Form	Liquid
Buffer	PBS, 20% Glycerol
Preservative	0.025% ProClin 300
Storage	Store as concentrated solution. Centrifuge briefly prior to opening vial. For short-term storage (1-2 weeks), store at 4°C. For long-term storage, aliquot and store at -20°C or below. Avoid multiple freeze-thaw cycles.
Concentration	1.46 mg/ml (Please refer to the vial label for the specific concentration.)
Immunogen	Recombinant protein encompassing a sequence within the center region of human Fibrillarin. The exact sequence is proprietary.
Purification	Purified by antigen-affinity chromatography.
Conjugation	Unconjugated

Note

For laboratory research use only. Not for any clinical, therapeutic, or diagnostic use in humans or animals. Not for animal or human consumption.

Purchasers shall not, and agree not to enable third parties to, analyze, copy, reverse engineer or otherwise attempt to determine the structure or sequence of the product.

For full product information, images and publications, please visit our [website](#).

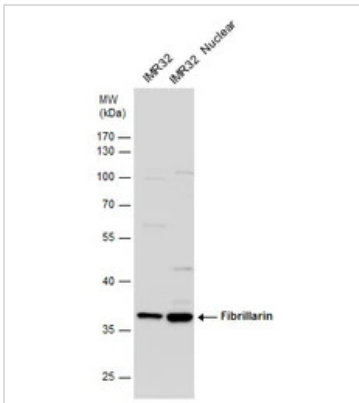
DATA IMAGES

GTx113684 IHC-P Image

Fibrillarin antibody detects Fibrillarin protein at nucleolus in mouse cervix by immunohistochemical analysis.

Sample: Paraffin-embedded mouse cervix.

Fibrillarin antibody (GTx113684) diluted at 1:500.

Antigen Retrieval: Citrate buffer, pH 6.0, 15 min

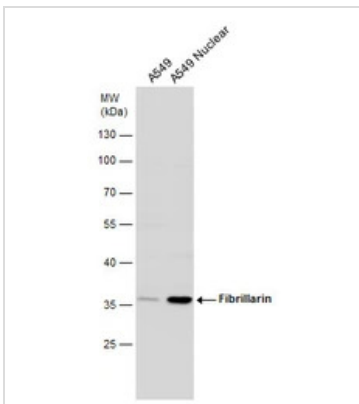

GTx113684 WB Image

Fibrillarin antibody detects Fibrillarin protein by western blot analysis.

whole cell lysate (30 µg) and nuclear extract (30 µg) from IMR32 cells

10 % SDS-PAGE

Fibrillarin antibody (GTx113684) dilution: 1:500

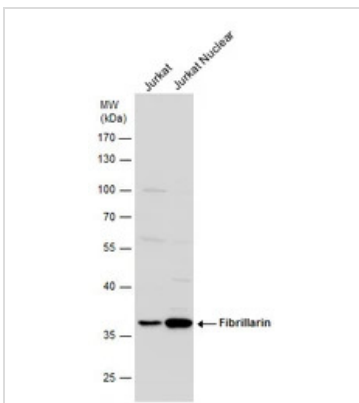

GTx113684 WB Image

Fibrillarin antibody detects Fibrillarin protein by western blot analysis.

whole cell lysate (30 µg) and nuclear extract(30 µg) from A549 cells

10 % SDS-PAGE

Fibrillarin antibody (GTx113684) dilution: 1:500


GTx113684 WB Image

Fibrillarin antibody detects Fibrillarin protein by western blot analysis.

whole cell lysate (30 µg) and nuclear extract (30 µg) from Jurkat cells

10 % SDS-PAGE

Fibrillarin antibody (GTx113684) dilution: 1:500



For full product information, images and publications, please visit our [website](http://www.genetex.com).