

Connexin 43 antibody

Cat. No. GTX11370

Host	Rabbit
Clonality	Polyclonal
Isotype	IgG
Applications	WB, ICC/IF, IHC-P, IHC-Fr
Reactivity	Human, Mouse, Rat, Hamster, Chicken

Package
100 µl

Applications

Application Note

*Optimal dilutions/concentrations should be determined by the researcher.

Suggested dilution	Recommended dilution
WB	1:8,000
ICC/IF	1:400
IHC-P	1:2,000
IHC-Fr	1:2,000

Not tested in other applications.

Calculated MW 43 kDa. ([Note](#))

Product Note

Anti-Connexin 43 reacts specifically with connexin 43. By immunoblotting, the antibody detects a single band or 2-3 bands at 43 kDa region. Staining of connexin 43 band(s) by immunoblotting is specifically inhibited with the connexin 43 peptide (amino acid residues 363-382). Reactivity has been observed with human, bovine, rat, mouse, hamster and chicken connexin 43.

Properties

Form	Liquid
Buffer	PBS, 1% BSA
Preservative	15mM Sodium azide
Storage	Store as concentrated solution. Centrifuge briefly prior to opening vial. For short-term storage (1-2 weeks), store at 4°C. For long-term storage, aliquot and store at -20°C or below. Avoid multiple freeze-thaw cycles.
Concentration	Batch dependent (Please refer to the vial label for the specific concentration.)
Immunogen	synthetic peptide corresponding to the C-terminal segment of the cytoplasmic domain (amino acids 363-382 with N-terminally added lysine) of human/rat connexin-43.
Purification	Purified by affinity chromatography
Conjugation	Unconjugated



For full product information, images and publications, please visit our [website](#).

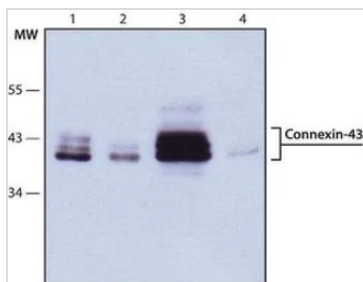
Date 2026 / 02 / 02 Page 1 of 2

For laboratory research use only. Not for any clinical, therapeutic, or diagnostic use in humans or animals. Not for animal or human consumption.

Note

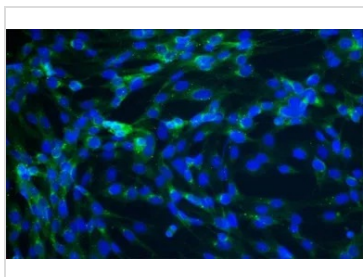
Purchasers shall not, and agree not to enable third parties to, analyze, copy, reverse engineer or otherwise attempt to determine the structure or sequence of the product.

DATA IMAGES



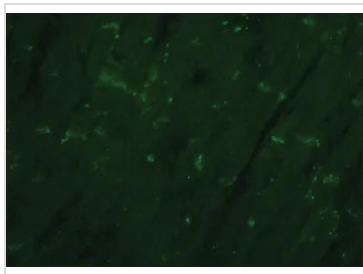
GTx11370 WB Image

WB analysis of (1) HEK-293 (2) P19 (3) Rat2 (4) MDCK cells using GTx11370 Connexin 43 antibody at 1:2000.



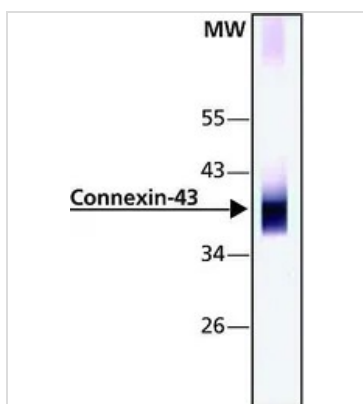
GTx11370 ICC/IF Image

ICC/IF analysis of BHK cells using GTx11370 Connexin 43 antibody at 1:400(green) with DAPI(blue). Cells were fixed and permeabilized with methanol followed by methanol:acetone.



GTx11370 IHC-P Image

IHC-P analysis of human heart tissue using GTx11370 Connexin 43 antibody at 1:2000.



GTx11370 WB Image

WB analysis of mouse brain extract using GTx11370 Connexin 43 antibody at 1:8000.



For full product information, images and publications, please visit our [website](https://www.genetex.com).