

HLA-DRA antibody [N2C3]

Cat. No. GTX113732

Host	Rabbit
Clonality	Polyclonal
Isotype	IgG
Applications	WB, ICC/IF, IHC-P
Reactivity	Human

References (1)

 Review (1)

Package

100 µl, 25 µl

Applications

Application Note

*Optimal dilutions/concentrations should be determined by the researcher.

Suggested dilution	Recommended dilution
WB	1:500-1:3000
ICC/IF	1:100-1:1000
IHC-P	1:100-1:1000

Not tested in other applications.

Calculated MW 29 kDa. ([Note](#))

Properties

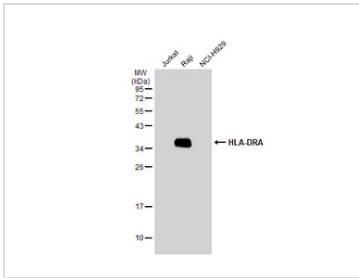
Form	Liquid
Buffer	PBS, 1% BSA, 20% Glycerol
Preservative	0.025% ProClin 300
Storage	Store as concentrated solution. Centrifuge briefly prior to opening vial. For short-term storage (1-2 weeks), store at 4°C. For long-term storage, aliquot and store at -20°C or below. Avoid multiple freeze-thaw cycles.
Concentration	0.18 mg/ml (Please refer to the vial label for the specific concentration.)
Immunogen	Recombinant protein encompassing a sequence within the center region of human HLA-DRA. The exact sequence is proprietary.
Purification	Purified by antigen-affinity chromatography.
Conjugation	Unconjugated
Note	For laboratory research use only. Not for any clinical, therapeutic, or diagnostic use in humans or animals. Not for animal or human consumption. Purchasers shall not, and agree not to enable third parties to, analyze, copy, reverse engineer or otherwise attempt to determine the structure or sequence of the product.



For full product information, images and publications, please visit our [website](#).

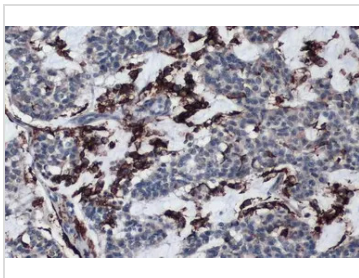
Date 2026 / 05 / 29 Page 1 of 2

DATA IMAGES

**GTX113732 WB Image**

Various whole cell extracts (30 µg) were separated by 12% SDS-PAGE, and the membrane was blotted with HLA-DRA antibody [N2C3] (GTX113732) diluted at 1:1000. The HRP-conjugated anti-rabbit IgG antibody (GTX213110-01) was used to detect the primary antibody.

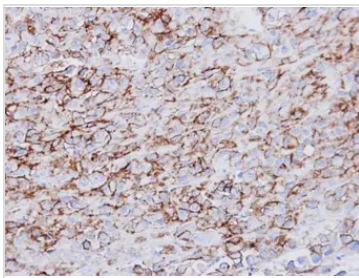
The observed expression level is based on the publication: [PMID: 24045666](https://pubmed.ncbi.nlm.nih.gov/24045666/)

**GTX113732 IHC-P Image**

HLA-DRA antibody [N2C3] detects HLA-DRA protein at cytoplasm by immunohistochemical analysis.
Sample: Paraffin-embedded human breast carcinoma.

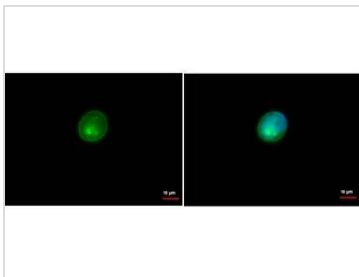
HLA-DRA stained by HLA-DRA antibody [N2C3] (GTX113732) diluted at 1:10000.

Antigen Retrieval: Citrate buffer, pH 6.0, 15 min

**GTX113732 IHC-P Image**

Immunohistochemical analysis of paraffin-embedded MDA-MB-231 xenograft, using HLA-DRA(GTX113732) antibody at 1:500 dilution.

Antigen Retrieval: Trilogy™ (EDTA based, pH 8.0) buffer, 15min

**GTX113732 ICC/IF Image**

HLA-DRA antibody [N2C3] detects HLA-DRA protein by immunofluorescent analysis.

Sample: Raji cells were fixed in 100% Methanol for 5 min.

Green: HLA-DRA protein stained by HLA-DRA antibody [N2C3] (GTX113732) diluted at 1:500.

Blue: Hoechst 33342 staining.

Scale bar = 10 µm.



For full product information, images and publications, please visit our [website](https://www.genetex.com).