

MSH3 antibody [C2C3], C-term

Cat. No. GTX113781

Host	Rabbit
Clonality	Polyclonal
Isotype	IgG
Applications	WB, ICC/IF, IHC-P
Reactivity	Human

Package
100 µl, 25 µl

Applications

Application Note

*Optimal dilutions/concentrations should be determined by the researcher.

Suggested dilution	Recommended dilution
WB	1:500-1:3000
ICC/IF	1:100-1:1000
IHC-P	1:100-1:1000

Not tested in other applications.

Calculated MW 127 kDa. ([Note](#))

Properties

Form	Liquid
Buffer	PBS, 20% Glycerol
Preservative	0.025% ProClin 300
Storage	Store as concentrated solution. Centrifuge briefly prior to opening vial. For short-term storage (1-2 weeks), store at 4°C. For long-term storage, aliquot and store at -20°C or below. Avoid multiple freeze-thaw cycles.
Concentration	1.79 mg/ml (Please refer to the vial label for the specific concentration.)
Immunogen	Recombinant protein encompassing a sequence within the C-terminus region of human MSH3. The exact sequence is proprietary.
Purification	Purified by antigen-affinity chromatography.
Conjugation	Unconjugated

Note

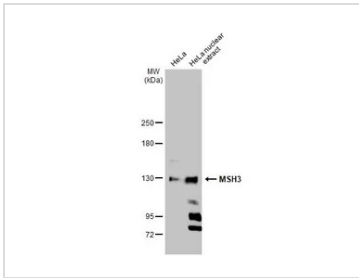
For laboratory research use only. Not for any clinical, therapeutic, or diagnostic use in humans or animals. Not for animal or human consumption.

Purchasers shall not, and agree not to enable third parties to, analyze, copy, reverse engineer or otherwise attempt to determine the structure or sequence of the product.

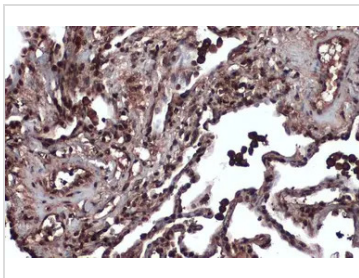


For full product information, images and publications, please visit our [website](#).

DATA IMAGES

**GTX113781 WB Image**

HeLa whole cell and nuclear extracts (30 µg) were separated by 5% SDS-PAGE, and the membrane was blotted with MSH3 antibody [C2C3], C-term (GTX113781) diluted at 1:1000. The HRP-conjugated anti-rabbit IgG antibody (GTX213110-01) was used to detect the primary antibody.

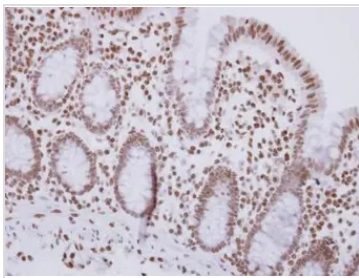
**GTX113781 IHC-P Image**

MSH3 antibody [C2C3], C-term detects MSH3 protein at nucleus by immunohistochemical analysis.

Sample: Paraffin-embedded human lung cancer.

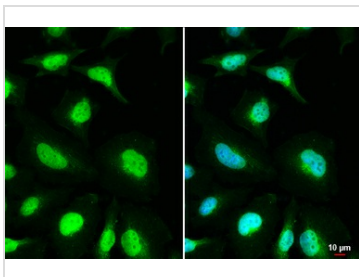
MSH3 stained by MSH3 antibody [C2C3], C-term (GTX113781) diluted at 1:600.

Antigen Retrieval: Citrate buffer, pH 6.0, 15 min

**GTX113781 IHC-P Image**

Immunohistochemical analysis of paraffin-embedded human colon carcinoma, using MSH3(GTX113781) antibody at 1:500 dilution.

Antigen Retrieval: Trilogy™ (EDTA based, pH 8.0) buffer, 15min

**GTX113781 ICC/IF Image**

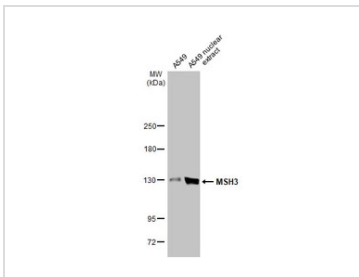
MSH3 antibody [C2C3], C-term detects MSH3 protein at nucleus by immunofluorescent analysis.

Sample: HeLa cells were fixed in 4% paraformaldehyde at RT for 15 min.

Green: MSH3 stained by MSH3 antibody [C2C3], C-term (GTX113781) diluted at 1:500.

Blue: Fluoroshield with DAPI (GTX30920).

Scale bar= 10 µm.

**GTX113781 WB Image**

A549 whole cell and nuclear extracts (30 µg) were separated by 5% SDS-PAGE, and the membrane was blotted with MSH3 antibody [C2C3], C-term (GTX113781) diluted at 1:1000. The HRP-conjugated anti-rabbit IgG antibody (GTX213110-01) was used to detect the primary antibody.



For full product information, images and publications, please visit our [website](#).