

## SDHB antibody

Cat. No. GTX113833

Host	Rabbit
Clonality	Polyclonal
Isotype	IgG
Application	WB, ICC/IF, IHC-P
Reactivity	Human, Mouse, Rat

Reference ( 8 )

Package

100 µl, 25 µl

## APPLICATION

## Application Note

\*Optimal dilutions/concentrations should be determined by the researcher.

Suggested dilution	Recommended dilution
WB	1:500-1:3000
ICC/IF	1:100-1:1000
IHC-P	1:100-1:1000

Not tested in other applications.

Calculated MW 32 kDa. ( [Note](#) )

## PROPERTIES

Form	Liquid
Buffer	PBS, 1% BSA, 20% Glycerol
Preservative	0.025% ProClin 300
Storage	Store as concentrated solution. Centrifuge briefly prior to opening vial. For short-term storage (1-2 weeks), store at 4°C. For long-term storage, aliquot and store at -20°C or below. Avoid multiple freeze-thaw cycles.
Concentration	0.42 mg/ml (Please refer to the vial label for the specific concentration.)
Immunogen	Recombinant protein encompassing a sequence within the center region of human SDHB. The exact sequence is proprietary.
Purification	Purified by antigen-affinity chromatography.
Conjugation	Unconjugated

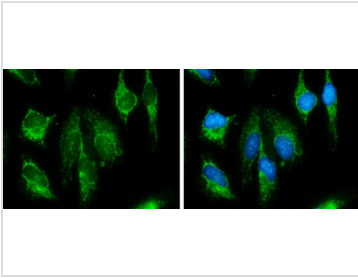
## Note

For laboratory research use only. Not for any clinical, therapeutic, or diagnostic use in humans or animals. Not for animal or human consumption.

Purchasers shall not, and agree not to enable third parties to, analyze, copy, reverse engineer or otherwise attempt to determine the structure or sequence of the product.



For full product information, images and publications, please visit our [website](#).

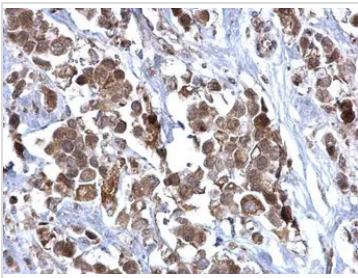
**DATA IMAGES**

**GTx113833 ICC/IF Image**

SDHB antibody detects SDHB protein at mitochondria by immunofluorescent analysis.

Sample: HeLa cells were fixed in MeOH for 5 min.

Green: SDHB protein stained by SDHB antibody (GTx113833) diluted at 1:500.

Blue: Hoechst 33342 staining.

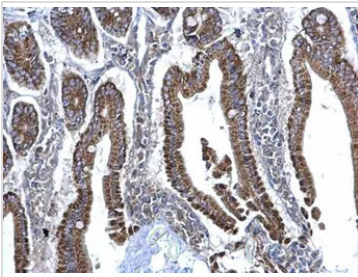

**GTx113833 IHC-P Image**

SDHB antibody detects SDHB protein at mitochondria on human breast carcinoma by immunohistochemical analysis.

Sample: Paraffin-embedded human breast carcinoma.

SDHB antibody (GTx113833) dilution: 1:500.

Antigen Retrieval: Trilogy™ (EDTA based, pH 8.0) buffer, 15min

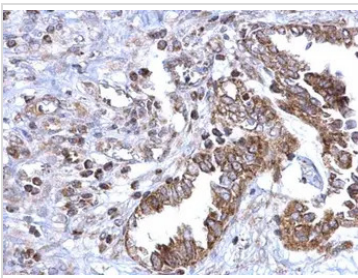

**GTx113833 IHC-P Image**

SDHB antibody detects SDHB protein at mitochondria on mouse intestine by immunohistochemical analysis.

Sample: Paraffin-embedded mouse intestine.

SDHB antibody (GTx113833) dilution: 1:500.

Antigen Retrieval: Trilogy™ (EDTA based, pH 8.0) buffer, 15min

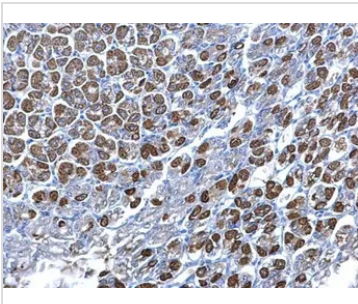

**GTx113833 IHC-P Image**

SDHB antibody detects SDHB protein at mitochondria on human ovarian carcinoma by immunohistochemical analysis.

Sample: Paraffin-embedded human ovarian carcinoma.

SDHB antibody (GTx113833) dilution: 1:500.

Antigen Retrieval: Trilogy™ (EDTA based, pH 8.0) buffer, 15min


**GTx113833 IHC-P Image**

SDHB antibody detects SDHB protein at mitochondria on mouse stomach by immunohistochemical analysis.

Sample: Paraffin-embedded mouse stomach.

SDHB antibody (GTx113833) dilution: 1:500.

Antigen Retrieval: Trilogy™ (EDTA based, pH 8.0) buffer, 15min



For full product information, images and publications, please visit our [website](#).