

## SET antibody

Cat. No. GTX113834

Host	Rabbit
Clonality	Polyclonal
Isotype	IgG
Application	WB, ICC/IF, IP
Reactivity	Human, Mouse, Rat

Reference ( 4 )

★★★★☆ Review ( 1 )

Package

100 µl, 25 µl

## APPLICATION

## Application Note

\*Optimal dilutions/concentrations should be determined by the researcher.

Suggested dilution	Recommended dilution
WB	1:500-1:3000
ICC/IF	1:100-1:1000
IP	1:100-1:500

Not tested in other applications.

Calculated MW	33 kDa. ( <a href="#">Note</a> )
Observed MW	42/44 kDa. The observed M.W. is based on the following publication. PMID: 9597000
Product Note	Knockdown/Knockout validation was supported by customer review data.

## PROPERTIES

Form	Liquid
Buffer	0.1M Tris, 0.1M Glycine, 20% Glycerol
Preservative	0.01% Thimerosal
Storage	Store as concentrated solution. Centrifuge briefly prior to opening vial. For short-term storage (1-2 weeks), store at 4°C. For long-term storage, aliquot and store at -20°C or below. Avoid multiple freeze-thaw cycles.
Concentration	0.43 mg/ml (Please refer to the vial label for the specific concentration.)
Immunogen	Recombinant protein encompassing a sequence within the center region of human SET. The exact sequence is proprietary.
Purification	Purified by antigen-affinity chromatography.
Conjugation	Unconjugated

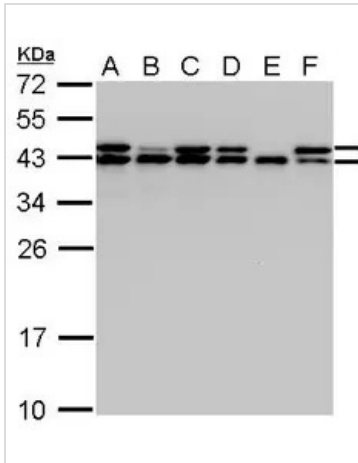


For full product information, images and publications, please visit our [website](#).

For laboratory research use only. Not for any clinical, therapeutic, or diagnostic use in humans or animals. Not for animal or human consumption.

**Note**

Purchasers shall not, and agree not to enable third parties to, analyze, copy, reverse engineer or otherwise attempt to determine the structure or sequence of the product.

**DATA IMAGES**

**GTx113834 WB Image**

SET antibody detects SET protein by Western blot analysis.

A. 30 µg A431 whole cell lysate/extract whole cell lysate/extract

B. 30 µg H1299 whole cell lysate/extract

C. 30 µg HeLa whole cell lysate/extract

D. 30 µg HepG2 whole cell lysate/extract

E. 30 µg Molt-4 whole cell lysate/extract

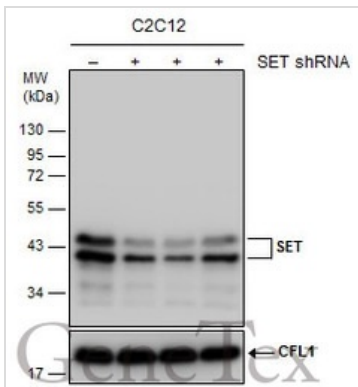
F. 30 µg Raji whole cell lysate/extract

12 % SDS-PAGE

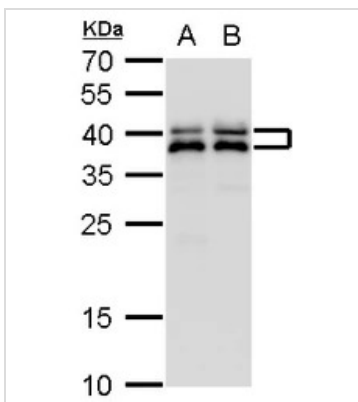
SET antibody (GTx113834) dilution: 1:1000 SET antibody detects SET protein by Western blot analysis.

Observed SET protein is larger than the predicted M.W., possibly due to post-translational modifications.

Reference: [Exp Cell Res. 1998 May 1;240\(2\):274-81.](#)


**GTx113834 WB Image**

Non-transfected (-) and transfected (+) C2C12 whole cell extracts (30 µg) were separated by 12% SDS-PAGE, and the membrane was blotted with SET antibody (GTx113834) diluted at 1:1000.


**GTx113834 WB Image**

SET antibody detects SET protein by western blot analysis.

A. 30 µg PC-12 whole cell lysate/extract

B. 30 µg Rat2 whole cell lysate/extract

12 % SDS-PAGE

SET antibody (GTx113834) dilution: 1:1000



For full product information, images and publications, please visit our [website](#).