

TBX5 antibody

Cat. No. GTX113849

Host	Rabbit
Clonality	Polyclonal
Isotype	IgG
Application	WB, ICC/IF, IHC-P
Reactivity	Human, Rat, Zebrafish

Reference (1)

Package

100 µl, 25 µl

APPLICATION

Application Note

*Optimal dilutions/concentrations should be determined by the researcher.

Suggested dilution	Recommended dilution
WB	1:500-1:3000
ICC/IF	1:100-1:1000
IHC-P	1:100-1:1000

Not tested in other applications.

Calculated MW 58 kDa. ([Note](#))

PROPERTIES

Form	Liquid
Buffer	PBS, 1% BSA, 20% Glycerol
Preservative	0.025% ProClin 300
Storage	Store as concentrated solution. Centrifuge briefly prior to opening vial. For short-term storage (1-2 weeks), store at 4°C. For long-term storage, aliquot and store at -20°C or below. Avoid multiple freeze-thaw cycles.
Concentration	0.31 mg/ml (Please refer to the vial label for the specific concentration.)
Immunogen	Recombinant protein encompassing a sequence within the center region of human TBX5. The exact sequence is proprietary.
Purification	Purified by antigen-affinity chromatography.
Conjugation	Unconjugated

Note

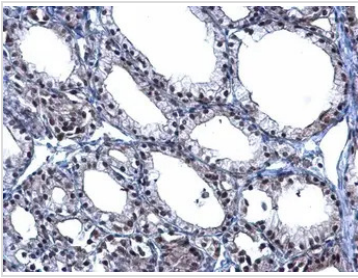
For laboratory research use only. Not for any clinical, therapeutic, or diagnostic use in humans or animals. Not for animal or human consumption.

Purchasers shall not, and agree not to enable third parties to, analyze, copy, reverse engineer or otherwise attempt to determine the structure or sequence of the product.



For full product information, images and publications, please visit our [website](#).

DATA IMAGES



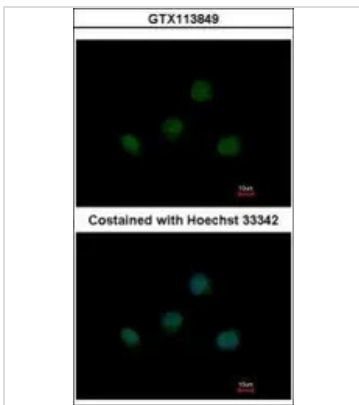
GTx113849 IHC-P Image

TBX5 antibody detects TBX5 protein at nucleus on rat thyroid gland by immunohistochemical analysis.

Sample: Paraffin-embedded rat thyroid gland.

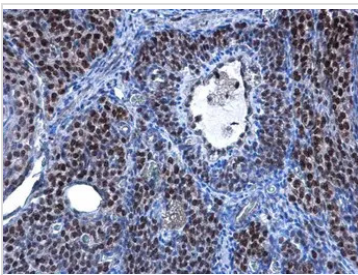
TBX5 antibody (GTx113849) diluted at 1:500.

Antigen Retrieval: Trilogy™ (EDTA based, pH 8.0) buffer, 15min



GTx113849 ICC/IF Image

Immunofluorescence analysis of paraformaldehyde-fixed HeLa, using TBX5(GTx113849) antibody at 1:500 dilution.



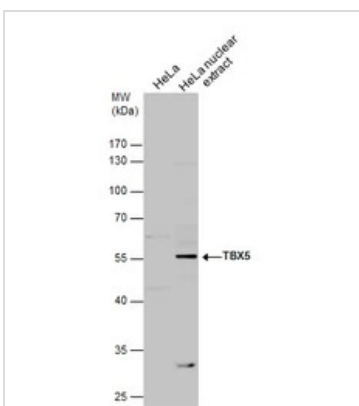
GTx113849 IHC-P Image

TBX5 antibody detects TBX5 protein at nucleus on rat thyroid gland by immunohistochemical analysis.

Sample: Paraffin-embedded rat thyroid gland.

TBX5 antibody (GTx113849) diluted at 1:500.

Antigen Retrieval: Trilogy™ (EDTA based, pH 8.0) buffer, 15min



GTx113849 WB Image

HeLa whole cell and nuclear extracts (30 µg) were separated by 10% SDS-PAGE, and the membrane was blotted with TBX5 antibody (GTx124336) diluted at 1:1000. The HRP-conjugated anti-rabbit IgG antibody (GTx213110-01) was used to detect the primary antibody.



For full product information, images and publications, please visit our [website](https://www.genetex.com).