

TCF7 antibody

Cat. No. GTX113851

Host	Rabbit
Clonality	Polyclonal
Isotype	IgG
Applications	WB, IHC-P, IP
Reactivity	Human, Mouse, Rat

Package
100 µl, 25 µl

Applications

Application Note

*Optimal dilutions/concentrations should be determined by the researcher.

Suggested dilution	Recommended dilution
WB	1:500-1:3000
IHC-P	Assay dependent
IP	1:100-1:500

Not tested in other applications.

Calculated MW 42 kDa. ([Note](#))

Properties

Form	Liquid
Buffer	PBS, 20% Glycerol
Preservative	0.01% Thimerosal
Storage	Store as concentrated solution. Centrifuge briefly prior to opening vial. For short-term storage (1-2 weeks), store at 4°C. For long-term storage, aliquot and store at -20°C or below. Avoid multiple freeze-thaw cycles.
Concentration	1 mg/ml (Please refer to the vial label for the specific concentration.)
Immunogen	Recombinant protein encompassing a sequence within the center region of human TCF7. The exact sequence is proprietary.
Purification	Purified by antigen-affinity chromatography.
Conjugation	Unconjugated

Note

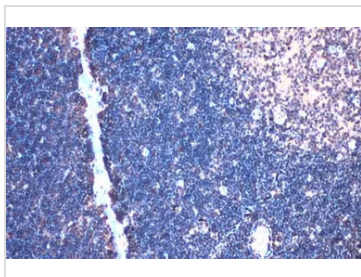
For laboratory research use only. Not for any clinical, therapeutic, or diagnostic use in humans or animals. Not for animal or human consumption.

Purchasers shall not, and agree not to enable third parties to, analyze, copy, reverse engineer or otherwise attempt to determine the structure or sequence of the product.



For full product information, images and publications, please visit our [website](#).

DATA IMAGES



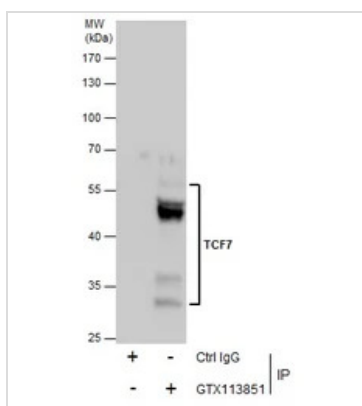
GTX113851 IHC-P Image

TCF7 antibody detects TCF7 protein at nucleus by immunohistochemical analysis.

Sample: Paraffin-embedded rat thymus gland.

TCF7 stained by TCF7 antibody (GTX113851) diluted at 1:500.

Antigen Retrieval: Citrate buffer, pH 6.0, 15 min

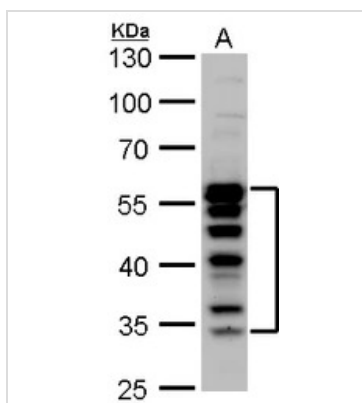


GTX113851 IP Image

Immunoprecipitation of TCF7 protein from Jurkat whole cell extracts using 5 µg of TCF7 antibody (GTX113851).

Western blot analysis was performed using TCF7 antibody (GTX113851).

EasyBlot anti-Rabbit IgG (GTX221666-01) was used as a secondary reagent.



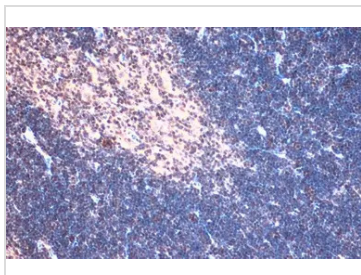
GTX113851 WB Image

TCF7 antibody detects TCF7 protein by Western blot analysis.

A. 30 µg Jurkat whole cell lysate/extract

10 % SDS-PAGE

TCF7 antibody (GTX113851) dilution: 1:1000



GTX113851 IHC-P Image

TCF7 antibody detects TCF7 protein at nucleus by immunohistochemical analysis.

Sample: Paraffin-embedded mouse thymus gland.

TCF7 stained by TCF7 antibody (GTX113851) diluted at 1:500.

Antigen Retrieval: Citrate buffer, pH 6.0, 15 min



For full product information, images and publications, please visit our [website](https://www.genetex.com).