

Tropomyosin 1 antibody

Cat. No. GTX113857

| | |
|---------------------|------------------------|
| Host | Rabbit |
| Clonality | Polyclonal |
| Isotype | IgG |
| Applications | WB, ICC/IF, IHC-P |
| Reactivity | Human, Mouse, Rat, Pig |

References (4)

Package

100 µl, 25 µl

Applications

Application Note

*Optimal dilutions/concentrations should be determined by the researcher.

| Suggested dilution | Recommended dilution |
|--------------------|----------------------|
| WB | 1:1000-1:10000 |
| ICC/IF | Assay dependent |
| IHC-P | 1:100-1:1000 |

Not tested in other applications.

Calculated MW 33 kDa. ([Note](#))

Properties

| | |
|----------------------|--|
| Form | Liquid |
| Buffer | PBS, 20% Glycerol |
| Preservative | 0.025% ProClin 300 |
| Storage | Store as concentrated solution. Centrifuge briefly prior to opening vial. For short-term storage (1-2 weeks), store at 4°C. For long-term storage, aliquot and store at -20°C or below. Avoid multiple freeze-thaw cycles. |
| Concentration | 1.05 mg/ml (Please refer to the vial label for the specific concentration.) |
| Immunogen | Recombinant protein encompassing a sequence within the center region of human Tropomyosin 1. The exact sequence is proprietary. |
| Purification | Purified by antigen-affinity chromatography. |
| Conjugation | Unconjugated |

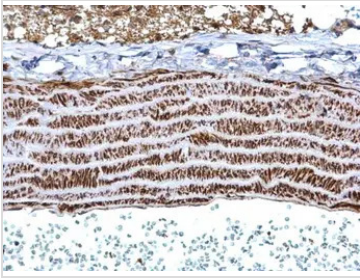
Note

For laboratory research use only. Not for any clinical, therapeutic, or diagnostic use in humans or animals. Not for animal or human consumption.

Purchasers shall not, and agree not to enable third parties to, analyze, copy, reverse engineer or otherwise attempt to determine the structure or sequence of the product.

For full product information, images and publications, please visit our [website](#).

DATA IMAGES

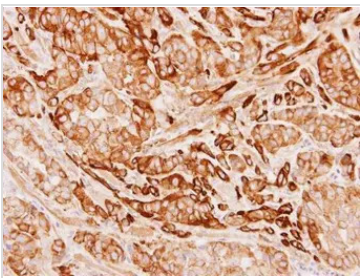
**GTX113857 IHC-P Image**

Tropomyosin 1 antibody detects Tropomyosin 1 protein at cytosol on mouse vein by immunohistochemical analysis.

Sample: Paraffin-embedded mouse vein.

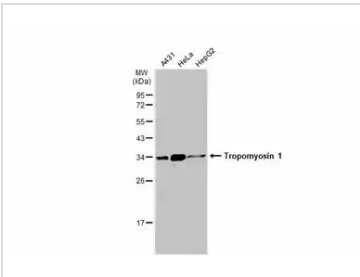
Tropomyosin 1 antibody (GTX113857) dilution: 1:500.

Antigen Retrieval: Trilogy™ (EDTA based, pH 8.0) buffer, 15min

**GTX113857 IHC-P Image**

Immunohistochemical analysis of paraffin-embedded A549 xenograft, using Tropomyosin 1(GTX113857) antibody at 1:500 dilution.

Antigen Retrieval: Trilogy™ (EDTA based, pH 8.0) buffer, 15min

**GTX113857 WB Image**

Various whole cell extracts (30 µg) were separated by 12% SDS-PAGE, and the membrane was blotted with Tropomyosin 1 antibody (GTX113857) diluted at 1:1000. The HRP-conjugated anti-rabbit IgG antibody (GTX213110-01) was used to detect the primary antibody.

**GTX113857 IHC-P Image**

Tropomyosin 1 antibody detects Tropomyosin 1 protein at cytosol on mouse vein by immunohistochemical analysis.

Sample: Paraffin-embedded mouse vein.

Tropomyosin 1 antibody (GTX113857) dilution: 1:500.

Antigen Retrieval: Trilogy™ (EDTA based, pH 8.0) buffer, 15min



For full product information, images and publications, please visit our [website](#).