

# TRPC6 antibody [N1N3]

**Cat. No. GTX113858**

<b>Host</b>	Rabbit
<b>Clonality</b>	Polyclonal
<b>Isotype</b>	IgG
<b>Applications</b>	WB, IHC-P
<b>Reactivity</b>	Human, Mouse, Rat

References ( 1 )  
 Package  
 100 µl, 25 µl

## Applications

### Application Note

\*Optimal dilutions/concentrations should be determined by the researcher.

Suggested dilution	Recommended dilution
WB	1:500-1:3000
IHC-P	1:100-1:1000

Not tested in other applications.

**Calculated MW** 106 kDa. ([Note](#))

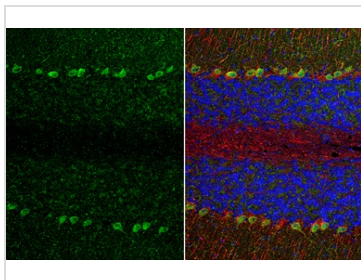
## Properties

<b>Form</b>	Liquid
<b>Buffer</b>	0.1M Tris, 0.1M Glycine, 20% Glycerol
<b>Preservative</b>	0.01% Thimerosal
<b>Storage</b>	Store as concentrated solution. Centrifuge briefly prior to opening vial. For short-term storage (1-2 weeks), store at 4°C. For long-term storage, aliquot and store at -20°C or below. Avoid multiple freeze-thaw cycles.
<b>Concentration</b>	0.84 mg/ml (Please refer to the vial label for the specific concentration.)
<b>Immunogen</b>	Recombinant protein encompassing a sequence within the Intracellular domain of human TRPC6. The exact sequence is proprietary.
<b>Purification</b>	Purified by antigen-affinity chromatography.
<b>Conjugation</b>	Unconjugated
<b>Note</b>	For laboratory research use only. Not for any clinical, therapeutic, or diagnostic use in humans or animals. Not for animal or human consumption.  Purchasers shall not, and agree not to enable third parties to, analyze, copy, reverse engineer or otherwise attempt to determine the structure or sequence of the product.



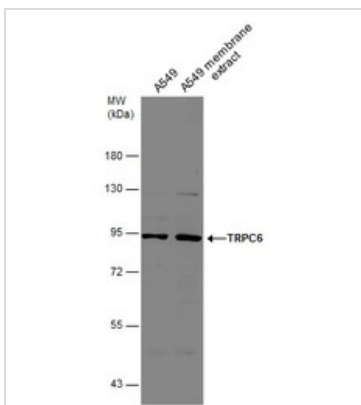
For full product information, images and publications, please visit our [website](#).

DATA IMAGES



**GTX113858 IHC-P Image**

TRPC6 antibody [N1N3] detects TRPC6 protein at cytoplasm by immunohistochemical analysis.  
 Sample: Paraffin-embedded mouse cerebellum.  
 Green: TRPC6 stained by TRPC6 antibody [N1N3] (GTX113858) diluted at 1:500.  
 Red: NF-H, a neuron marker, stained by NF-H antibody [GT114] (GTX634289) diluted at 1:500.  
 Blue: Fluoroshield with DAPI (GTX30920).  
 Antigen Retrieval: Citrate buffer, pH 6.0, 15 min



**GTX113858 WB Image**

A549 whole cell and membrane extracts (30 µg) were separated by 7.5% SDS-PAGE, and the membrane was blotted with TRPC6 antibody (GTX113858) diluted at 1:1000.



For full product information, images and publications, please visit our [website](#).