

## UNG antibody

Cat. No. GTX113860

Host	Rabbit
Clonality	Polyclonal
Isotype	IgG
Applications	WB, ICC/IF, Multiplexing
Reactivity	Human

References ( 4 )

★★★★☆ Review ( 1 )

Package

100 µl, 25 µl

## Applications

## Application Note

\*Optimal dilutions/concentrations should be determined by the researcher.

Suggested dilution	Recommended dilution
WB	1:500-1:3000
ICC/IF	1:100-1:1000
Multiplexing	Assay dependent

Not tested in other applications.

Calculated MW 35 kDa. ( [Note](#) )

## Properties

Form	Liquid
Buffer	0.1M Tris, 0.1M Glycine, 20% Glycerol
Preservative	0.01% Thimerosal
Storage	Store as concentrated solution. Centrifuge briefly prior to opening vial. For short-term storage (1-2 weeks), store at 4°C. For long-term storage, aliquot and store at -20°C or below. Avoid multiple freeze-thaw cycles.
Concentration	0.71 mg/ml (Please refer to the vial label for the specific concentration.)
Immunogen	Recombinant protein encompassing a sequence within the center region of human UNG. The exact sequence is proprietary.
Purification	Purified by antigen-affinity chromatography.
Conjugation	Unconjugated

## Note

For laboratory research use only. Not for any clinical, therapeutic, or diagnostic use in humans or animals. Not for animal or human consumption.

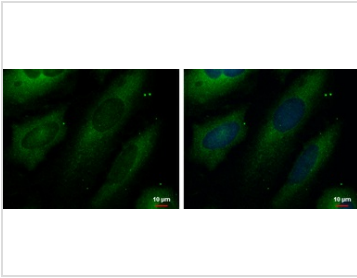
Purchasers shall not, and agree not to enable third parties to, analyze, copy, reverse engineer or otherwise attempt to determine the structure or sequence of the product.



For full product information, images and publications, please visit our [website](#).

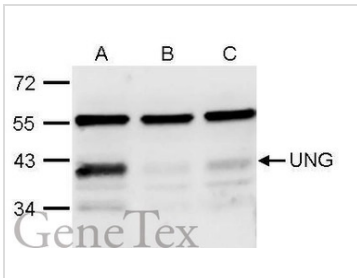
Date 2026 / 02 / 01 Page 1 of 2

## DATA IMAGES



### GTX113860 ICC/IF Image

UNG antibody detects UNG protein at cytoplasm by immunofluorescent analysis.  
 Sample: HeLa cells were fixed in 2% paraformaldehyde/culture medium at 37°C for 30 min.  
 Green: UNG protein stained by UNG antibody (GTX113860) diluted at 1:500.  
 Blue: Hoechst 33342 staining.



### GTX113860 WB Image

UNG antibody detects UNG protein by Western blot analysis.  
 A. 30 μg HeLa whole cell lysate/extract  
 B. 30 μg whole cell lysate/extract of UNG shRNA#1-transfected HeLa cells  
 C. 30 μg whole cell lysate/extract of UNG shRNA#2-transfected HeLa cells  
 11 % SDS-PAGE  
 UNG antibody (GTX113860) dilution: 1:1000



For full product information, images and publications, please visit our [website](https://www.genetex.com).