

FXR1 antibody

Cat. No. GTX113867

Host	Rabbit
Clonality	Polyclonal
Isotype	IgG
Applications	WB, ICC/IF, IHC-P, IP
Reactivity	Human, Mouse, Rat, Zebrafish

References (6)

Package

100 µl, 25 µl

Applications

Application Note

*Optimal dilutions/concentrations should be determined by the researcher.

Suggested dilution	Recommended dilution
WB	1:500-1:3000
ICC/IF	1:100-1:1000
IHC-P	1:100-1:1000
IP	Assay dependent

Not tested in other applications.

Calculated MW 70 kDa. ([Note](#))

Product Note Based on internal testing result, this antibody may cross react with human FXR2 and FMR1 protein.

Properties

Form	Liquid
Buffer	PBS, 20% Glycerol
Preservative	0.025% ProClin 300
Storage	Store as concentrated solution. Centrifuge briefly prior to opening vial. For short-term storage (1-2 weeks), store at 4°C. For long-term storage, aliquot and store at -20°C or below. Avoid multiple freeze-thaw cycles.
Concentration	0.57 mg/ml (Please refer to the vial label for the specific concentration.)
Immunogen	Recombinant protein encompassing a sequence within the center region of human FXR1. The exact sequence is proprietary.
Purification	Purified by antigen-affinity chromatography.
Conjugation	Unconjugated



For full product information, images and publications, please visit our [website](#).

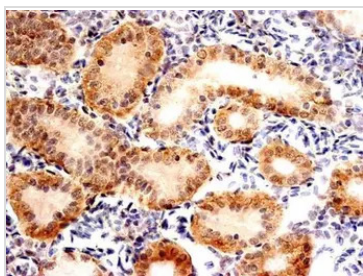
Date 2025 / 05 / 05 Page 1 of 2

For laboratory research use only. Not for any clinical, therapeutic, or diagnostic use in humans or animals. Not for animal or human consumption.

Note

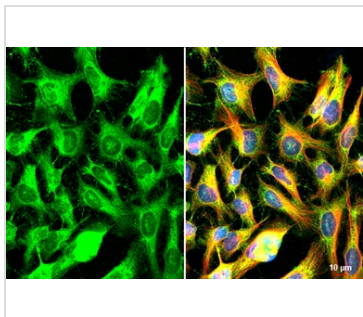
Purchasers shall not, and agree not to enable third parties to, analyze, copy, reverse engineer or otherwise attempt to determine the structure or sequence of the product.

DATA IMAGES



GTx113867 IHC-P Image

Immunohistochemical analysis of paraffin-embedded sections of zebrafish kidney tube, using FXR1 antibody (GTx113867) at 1:300 dilution.



GTx113867 ICC/IF Image

FXR1 antibody detects FXR1 protein at cytoplasm by immunofluorescent analysis.

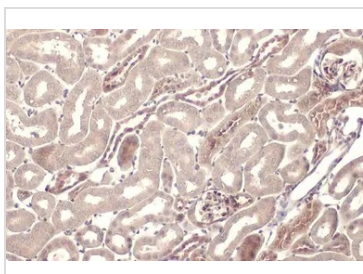
Sample: HeLa cells were fixed in ice-cold MeOH for 5 min.

Green: FXR1 stained by FXR1 antibody (GTx113867) diluted at 1:500.

Red: alpha Tubulin, a cytoskeleton marker, stained by alpha Tubulin antibody [GT114] (GTx628802) diluted at 1:1000.

Blue: Fluoroshield with DAPI (GTx30920).

Scale bar= 10µm.



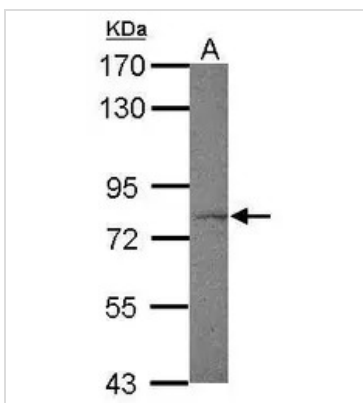
GTx113867 IHC-P Image

FXR1 antibody detects FXR1 protein at cytoplasm by immunohistochemical analysis.

Sample: Paraffin-embedded mouse kidney.

FXR1 stained by FXR1 antibody (GTx113867) diluted at 1:500.

Antigen Retrieval: Citrate buffer, pH 6.0, 15 min



GTx113867 WB Image

Sample (30 µg of whole cell lysate)

A: zebrafish brain

7.5% SDS PAGE

GTx113867 diluted at 1:1000



For full product information, images and publications, please visit our [website](https://www.genetex.com).