

FXR1 antibody

Cat. No. GTX113867

| | |
|--------------|------------------------------|
| Host | Rabbit |
| Clonality | Polyclonal |
| Isotype | IgG |
| Applications | WB, ICC/IF, IHC-P, IP |
| Reactivity | Human, Mouse, Rat, Zebrafish |

References (6)

Package

100 µl, 25 µl

Applications

Application Note

*Optimal dilutions/concentrations should be determined by the researcher.

| Suggested dilution | Recommended dilution |
|--------------------|----------------------|
| WB | 1:500-1:3000 |
| ICC/IF | 1:100-1:1000 |
| IHC-P | 1:100-1:1000 |
| IP | Assay dependent |

Not tested in other applications.

Calculated MW 70 kDa. ([Note](#))

Product Note Based on internal testing result, this antibody may cross react with human FXR2 and FMR1 protein.

Properties

| | |
|---------------|--|
| Form | Liquid |
| Buffer | PBS, 20% Glycerol |
| Preservative | 0.025% ProClin 300 |
| Storage | Store as concentrated solution. Centrifuge briefly prior to opening vial. For short-term storage (1-2 weeks), store at 4°C. For long-term storage, aliquot and store at -20°C or below. Avoid multiple freeze-thaw cycles. |
| Concentration | 0.57 mg/ml (Please refer to the vial label for the specific concentration.) |
| Immunogen | Recombinant protein encompassing a sequence within the center region of human FXR1. The exact sequence is proprietary. |
| Purification | Purified by antigen-affinity chromatography. |
| Conjugation | Unconjugated |

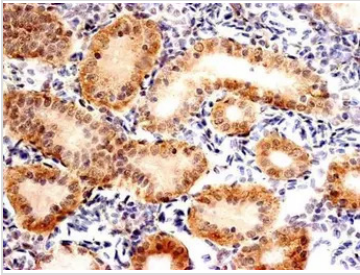
For full product information, images and publications, please visit our [website](#).

For laboratory research use only. Not for any clinical, therapeutic, or diagnostic use in humans or animals. Not for animal or human consumption.

Note

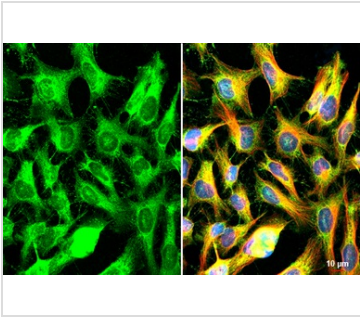
Purchasers shall not, and agree not to enable third parties to, analyze, copy, reverse engineer or otherwise attempt to determine the structure or sequence of the product.

DATA IMAGES



GTx113867 IHC-P Image

Immunohistochemical analysis of paraffin-embedded sections of zebrafish kidney tube, using FXR1 antibody (GTX113867) at 1:300 dilution.



GTx113867 ICC/IF Image

FXR1 antibody detects FXR1 protein at cytoplasm by immunofluorescent analysis.

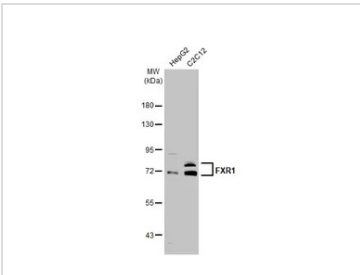
Sample: HeLa cells were fixed in ice-cold MeOH for 5 min.

Green: FXR1 stained by FXR1 antibody (GTX113867) diluted at 1:500.

Red: alpha Tubulin, a cytoskeleton marker, stained by alpha Tubulin antibody [GT114] (GTX628802) diluted at 1:1000.

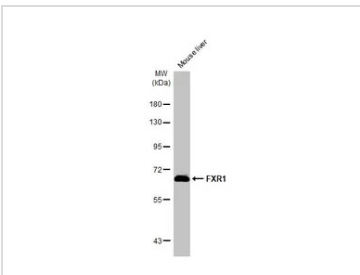
Blue: Fluoroshield with DAPI (GTX30920).

Scale bar= 10μm.



GTx113867 WB Image

Various whole cell extracts (30 μg) were separated by 7.5% SDS-PAGE, and the membrane was blotted with FXR1 antibody (GTX113867) diluted at 1:1000. The HRP-conjugated anti-rabbit IgG antibody (GTX213110-01) was used to detect the primary antibody.



GTx113867 WB Image

Mouse tissue extract (50 μg) was separated by 7.5% SDS-PAGE, and the membrane was blotted with FXR1 antibody (GTX113867) diluted at 1:1000. The HRP-conjugated anti-rabbit IgG antibody (GTX213110-01) was used to detect the primary antibody.



For full product information, images and publications, please visit our [website](https://www.genetex.com).