

## SRC3 antibody [N1N2], N-term

Cat. No. GTX113869

Host	Rabbit
Clonality	Polyclonal
Isotype	IgG
Application	WB, ICC/IF, IHC-P
Reactivity	Human

Reference ( 2 )

Package

100 µl, 25 µl

## APPLICATION

## Application Note

\*Optimal dilutions/concentrations should be determined by the researcher.

Suggested dilution	Recommended dilution
WB	1:500-1:3000
ICC/IF	1:100-1:1000
IHC-P	1:100-1:1000

Not tested in other applications.

Calculated MW 155 kDa. ( [Note](#) )

## PROPERTIES

Form	Liquid
Buffer	0.1M Tris, 0.1M Glycine, 20% Glycerol
Preservative	0.01% Thimerosal
Storage	Store as concentrated solution. Centrifuge briefly prior to opening vial. For short-term storage (1-2 weeks), store at 4°C. For long-term storage, aliquot and store at -20°C or below. Avoid multiple freeze-thaw cycles.
Concentration	1 mg/ml (Please refer to the vial label for the specific concentration.)
Immunogen	Recombinant protein encompassing a sequence within the N-terminus region of human SRC3. The exact sequence is proprietary.
Purification	Purified by antigen-affinity chromatography.
Conjugation	Unconjugated

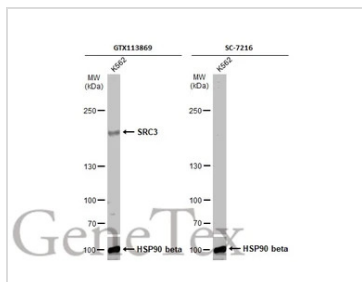
## Note

For laboratory research use only. Not for any clinical, therapeutic, or diagnostic use in humans or animals. Not for animal or human consumption.

Purchasers shall not, and agree not to enable third parties to, analyze, copy, reverse engineer or otherwise attempt to determine the structure or sequence of the product.

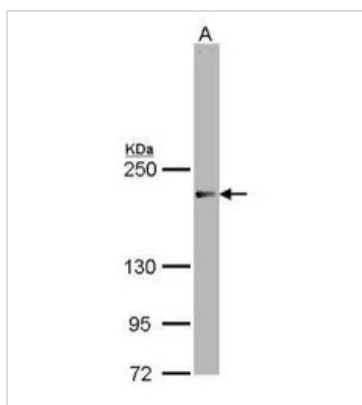


For full product information, images and publications, please visit our [website](#).

**DATA IMAGES**

**GTX113869 WB Image**

Whole cell extract (30  $\mu$ g) was separated by 5% SDS-PAGE, and the membranes were blotted with SRC3 antibody [N1N2], N-term (GTX113869) diluted at 1:2000 and competitor's antibody (SC-7216) diluted at 1:200. The HRP-conjugated anti-rabbit IgG antibody (GTX213110-01) was used to detect the primary antibody.

\*The competitor is not affiliated with GeneTex and does not endorse this product.

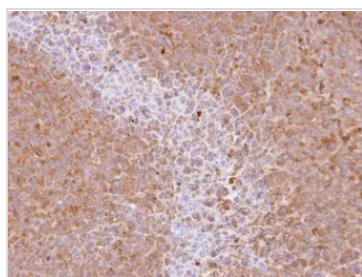

**GTX113869 WB Image**

Sample (30  $\mu$ g of whole cell lysate)

A: A431 (GTX27909)

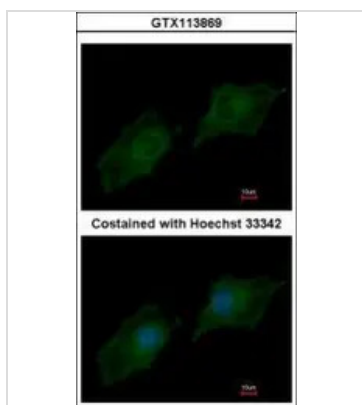
5% SDS PAGE

GTX113869 diluted at 1:2000


**GTX113869 IHC-P Image**

Immunohistochemical analysis of paraffin-embedded H1299 xenograft, using NCOA3(GTX113869) antibody at 1:500 dilution.

Antigen Retrieval: Trilogy™ (EDTA based, pH 8.0) buffer, 15min


**GTX113869 ICC/IF Image**

Immunofluorescence analysis of methanol-fixed HeLa, using SRC3 antibody [N1N2], N-term (GTX113869) at 1:200 dilution.



For full product information, images and publications, please visit our [website](https://www.genetex.com).