

Cullin 4a antibody [N1C1]

Cat. No. GTX113876

Host	Rabbit
Clonality	Polyclonal
Isotype	IgG
Applications	WB, IHC-Wm
Reactivity	Human, Zebrafish

References (5)

Package

100 µl, 25 µl

Applications

Application Note

*Optimal dilutions/concentrations should be determined by the researcher.

Suggested dilution	Recommended dilution
WB	1:500-1:3000
IHC-Wm	Assay dependent

Not tested in other applications.

Calculated MW 88 kDa. ([Note](#))

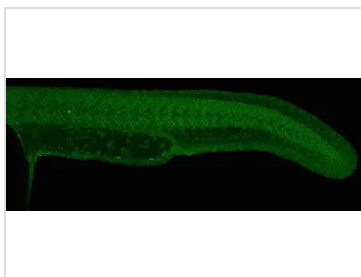
Properties

Form	Liquid
Buffer	0.1M Tris, 0.1M Glycine, 20% Glycerol
Preservative	0.01% Thimerosal
Storage	Store as concentrated solution. Centrifuge briefly prior to opening vial. For short-term storage (1-2 weeks), store at 4°C. For long-term storage, aliquot and store at -20°C or below. Avoid multiple freeze-thaw cycles.
Concentration	1 mg/ml (Please refer to the vial label for the specific concentration.)
Immunogen	Recombinant protein encompassing a sequence within the center region of human Cullin 4a. The exact sequence is proprietary.
Purification	Purified by antigen-affinity chromatography.
Conjugation	Unconjugated
Note	For laboratory research use only. Not for any clinical, therapeutic, or diagnostic use in humans or animals. Not for animal or human consumption. Purchasers shall not, and agree not to enable third parties to, analyze, copy, reverse engineer or otherwise attempt to determine the structure or sequence of the product.



For full product information, images and publications, please visit our [website](#).

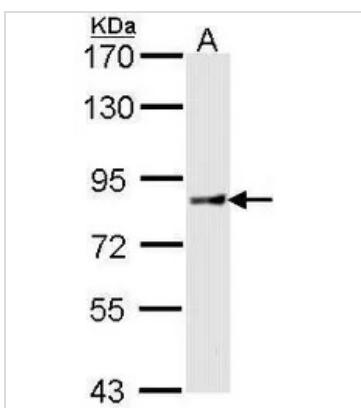
DATA IMAGES



GTx113876 IHC-Wm Image

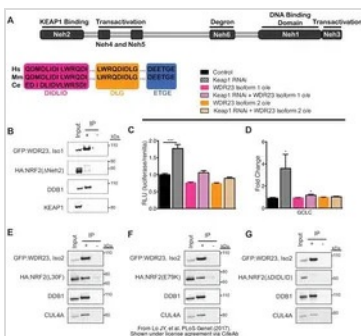
Cullin 4 antibody detects Cullin 4a protein at nucleus on whole-mount zebrafish embryos by immunohistochemical analysis.

Sample: Paraformaldehyde-fixed zebrafish embryos.
Cullin 4 antibody (GTx113876) dilution: 1:200.



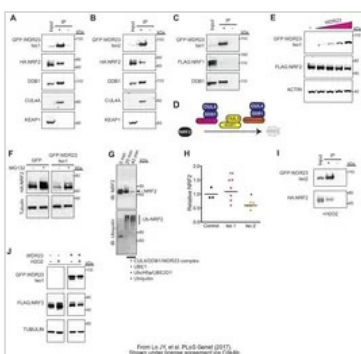
GTx113876 WB Image

Sample (30 ug of whole cell lysate)
A: Hep G2 (GTx27900)
7.5% SDS PAGE
GTx113876 diluted at 1:1000



GTx113876 WB Image

The data was published in the journal PLoS Genet in 2017. [PMID: 28453520](https://pubmed.ncbi.nlm.nih.gov/28453520/)



GTx113876 WB Image

The data was published in the journal PLoS Genet in 2017. [PMID: 28453520](https://pubmed.ncbi.nlm.nih.gov/28453520/)



For full product information, images and publications, please visit our [website](https://www.genetex.com).