

NOL3 antibody

Cat. No. GTX113889

Host	Rabbit
Clonality	Polyclonal
Isotype	IgG
Applications	WB, ICC/IF, IHC-P, IHC-Fr
Reactivity	Human, Mouse, Rat

References (1)

Package

100 µl, 25 µl

Applications

Application Note

*Optimal dilutions/concentrations should be determined by the researcher.

Suggested dilution	Recommended dilution
WB	1:500-1:3000
ICC/IF	1:100-1:1000
IHC-P	1:100-1:1000
IHC-Fr	1:100-1:1000

Not tested in other applications.

Calculated MW 24 kDa. ([Note](#))

Properties

Form	Liquid
Buffer	PBS, 20% Glycerol
Preservative	0.025% ProClin 300
Storage	Store as concentrated solution. Centrifuge briefly prior to opening vial. For short-term storage (1-2 weeks), store at 4°C. For long-term storage, aliquot and store at -20°C or below. Avoid multiple freeze-thaw cycles.
Concentration	1.3 mg/ml (Please refer to the vial label for the specific concentration.)
Immunogen	Recombinant protein encompassing a sequence within the center region of human NOL3. The exact sequence is proprietary.
Purification	Purified by antigen-affinity chromatography.
Conjugation	Unconjugated

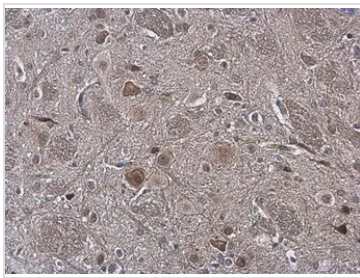
Note

For laboratory research use only. Not for any clinical, therapeutic, or diagnostic use in humans or animals. Not for animal or human consumption.

Purchasers shall not, and agree not to enable third parties to, analyze, copy, reverse engineer or otherwise attempt to determine the structure or sequence of the product.



For full product information, images and publications, please visit our [website](#).

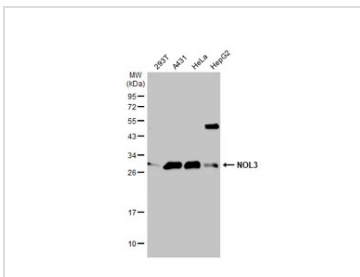
DATA IMAGES

GTX113889 IHC-P Image

NOL3 antibody detects NOL3 protein at cytoplasm and nucleus by immunohistochemical analysis.

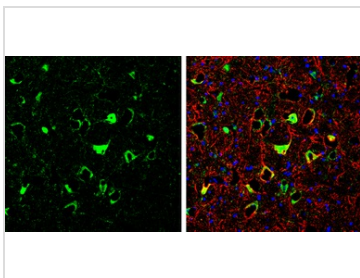
Sample: Paraffin-embedded rat brain.

NOL3 stained by NOL3 antibody (GTX113889) diluted at 1:500.

Antigen Retrieval: Citrate buffer, pH 6.0, 15 min


GTX113889 WB Image

Various whole cell extracts (30 µg) were separated by 12% SDS-PAGE, and the membrane was blotted with NOL3 antibody (GTX113889) diluted at 1:1000. The HRP-conjugated anti-rabbit IgG antibody (GTX213110-01) was used to detect the primary antibody.


GTX113889 IHC-Fr Image

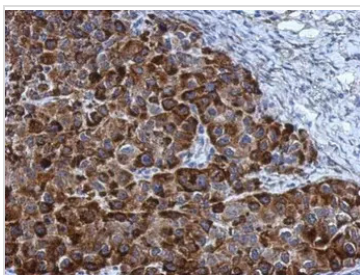
NOL3 antibody detects NOL3 protein by immunohistochemical analysis.

Sample: Frozen-sectioned mouse cerebellum.

Green: NOL3 stained by NOL3 antibody (GTX113889) diluted at 1:250.

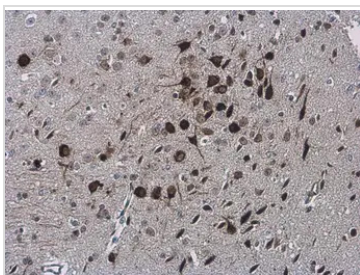
Red: NF-H, stained by NF-H antibody [GT114] (GTX634289) diluted at 1:500.

Blue: Fluoroshield with DAPI (GTX30920).


GTX113889 IHC-P Image

Immunohistochemical analysis of paraffin-embedded Hela xenograft, using NOL3(GTX113889) antibody at 1:500 dilution.

Antigen Retrieval: Trilogy™ (EDTA based, pH 8.0) buffer, 15min


GTX113889 IHC-P Image

NOL3 antibody detects NOL3 protein at cytoplasm and nucleus by immunohistochemical analysis.

Sample: Paraffin-embedded mouse brain.

NOL3 stained by NOL3 antibody (GTX113889) diluted at 1:500.

Antigen Retrieval: Citrate buffer, pH 6.0, 15 min



For full product information, images and publications, please visit our [website](https://www.genetex.com).