

ALY antibody

Cat. No. GTX113917

Host	Rabbit
Clonality	Polyclonal
Isotype	IgG
Application	WB, ICC/IF, IHC-P, IP
Reactivity	Human, Mouse

Reference (3)

Package

100 µl, 25 µl

APPLICATION

Application Note

*Optimal dilutions/concentrations should be determined by the researcher.

Suggested dilution	Recommended dilution
WB	1:500-1:3000
ICC/IF	1:100-1:1000
IHC-P	1:100-1:1000
IP	Assay dependent

Not tested in other applications.

Calculated MW 27 kDa. ([Note](#))

Product Note Knockdown/Knockout validation was supported by references (PMID: 33991457).

PROPERTIES

Form	Liquid
Buffer	0.1M Tris, 0.1M Glycine, 10% Glycerol
Preservative	0.01% Thimerosal
Storage	Store as concentrated solution. Centrifuge briefly prior to opening vial. For short-term storage (1-2 weeks), store at 4°C. For long-term storage, aliquot and store at -20°C or below. Avoid multiple freeze-thaw cycles.
Concentration	0.63 mg/ml (Please refer to the vial label for the specific concentration.)
Immunogen	Recombinant protein encompassing a sequence within the center region of human ALY. The exact sequence is proprietary.
Purification	Purified by antigen-affinity chromatography.
Conjugation	Unconjugated



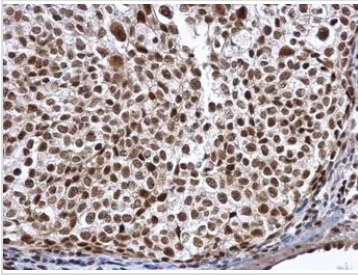
For full product information, images and publications, please visit our [website](#).

For laboratory research use only. Not for any clinical, therapeutic, or diagnostic use in humans or animals. Not for animal or human consumption.

Note

Purchasers shall not, and agree not to enable third parties to, analyze, copy, reverse engineer or otherwise attempt to determine the structure or sequence of the product.

DATA IMAGES



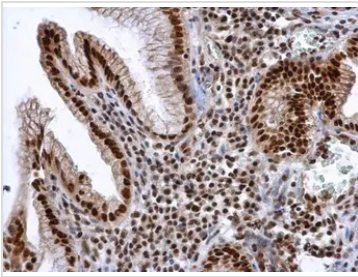
GTx113917 IHC-P Image

ALY antibody detects ALY protein at nucleus in human cervical carcinoma by immunohistochemical analysis.

Sample: Paraffin-embedded human cervical carcinoma.

ALY antibody (GTx113917) diluted at 1:500.

Antigen Retrieval: Citrate buffer, pH 6.0, 15 min



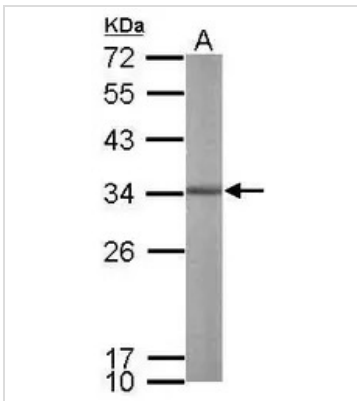
GTx113917 IHC-P Image

ALY antibody detects ALY protein at nucleus in human esophageal cancer by immunohistochemical analysis.

Sample: Paraffin-embedded human esophageal cancer.

ALY antibody (GTx113917) diluted at 1:500.

Antigen Retrieval: Citrate buffer, pH 6.0, 15 min



GTx113917 WB Image

Sample (50 ug of whole cell lysate)

A: mouse brain

12% SDS PAGE

GTx113917 diluted at 1:1000



For full product information, images and publications, please visit our [website](https://www.genetex.com).