

## Jab1 antibody [N1C1]

Cat. No. GTX113927

Host	Rabbit
Clonality	Polyclonal
Isotype	IgG
Applications	WB, ICC/IF, IHC-P, IHC-Wm
Reactivity	Human, Mouse, Zebrafish

References ( 2 )

Package

100 µl, 25 µl

## Applications

## Application Note

\*Optimal dilutions/concentrations should be determined by the researcher.

Suggested dilution	Recommended dilution
WB	1:500-1:3000
ICC/IF	1:100-1:1000
IHC-P	1:100-1:1000
IHC-Wm	Assay dependent

Not tested in other applications.

Calculated MW 38 kDa. ( [Note](#) )

## Properties

Form	Liquid
Buffer	0.1M Tris, 0.1M Glycine, 20% Glycerol
Preservative	0.01% Thimerosal
Storage	Store as concentrated solution. Centrifuge briefly prior to opening vial. For short-term storage (1-2 weeks), store at 4°C. For long-term storage, aliquot and store at -20°C or below. Avoid multiple freeze-thaw cycles.
Concentration	0.35 mg/ml (Please refer to the vial label for the specific concentration.)
Immunogen	Recombinant protein encompassing a sequence within the center region of human Jab1. The exact sequence is proprietary.
Purification	Purified by antigen-affinity chromatography.
Conjugation	Unconjugated

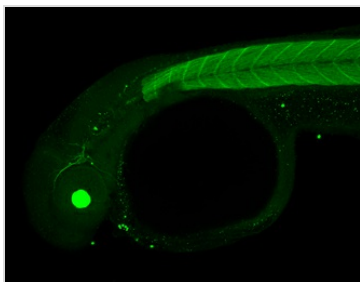
## Note

For laboratory research use only. Not for any clinical, therapeutic, or diagnostic use in humans or animals. Not for animal or human consumption.

Purchasers shall not, and agree not to enable third parties to, analyze, copy, reverse engineer or otherwise attempt to determine the structure or sequence of the product.



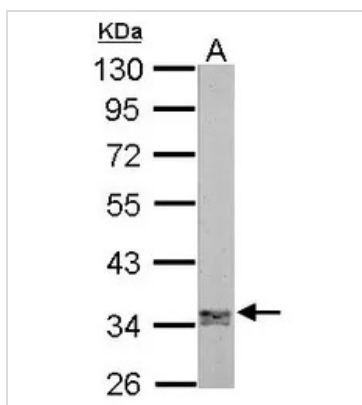
For full product information, images and publications, please visit our [website](#).

**DATA IMAGES**

**GTx113927 IHC-Wm Image**

Jab1 antibody [N1C1] detects Jab1 protein on zebrafish by whole mount immunohistochemical analysis.

Sample: 2 days-post-fertilization zebrafish embryo.

Jab1 antibody [N1C1] (GTx113927) dilution: 1:100.

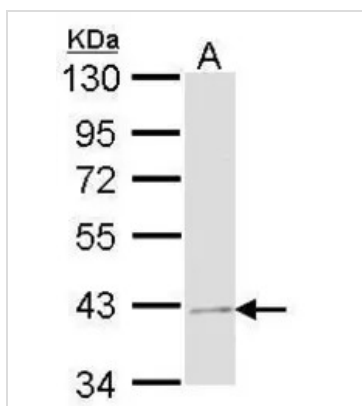

**GTx113927 WB Image**

Sample (30 µg of whole cell lysate)

A: Zebrafish eye

10% SDS PAGE

GTx113927 diluted at 1:1000

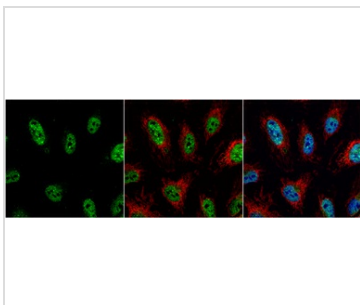

**GTx113927 WB Image**

Sample (30 ug of whole cell lysate)

A: HeLa

10% SDS PAGE

GTx113927 diluted at 1:1000


**GTx113927 ICC/IF Image**

JAB1 antibody [N1C1] detects JAB1 protein at nucleus by immunofluorescent analysis.

Sample: HeLa cells were fixed in 4% paraformaldehyde at RT for 15 min.

Green: JAB1 protein stained by JAB1 antibody [N1C1] (GTx113927) diluted at 1:200.

Red: FIS1, a mitochondria marker, stained by FIS1 antibody [GT9810] (GTx631209) diluted at 1:20000.

Blue: Hoechst 33342 staining.



For full product information, images and publications, please visit our [website](https://www.genetex.com).