

Calcium binding protein p22 antibody

Cat. No. GTX113936

Host	Rabbit
Clonality	Polyclonal
Isotype	IgG
Applications	WB, ICC/IF, IHC-P, IP
Reactivity	Human, Mouse, Rat

References (5)

Package

100 µl, 25 µl

Applications

Application Note

*Optimal dilutions/concentrations should be determined by the researcher.

Suggested dilution	Recommended dilution
WB	1:500-1:3000
ICC/IF	1:100-1:1000
IHC-P	1:100-1:1000
IP	Assay dependent

Not tested in other applications.

Calculated MW 22 kDa. ([Note](#))

Properties

Form	Liquid
Buffer	0.1M Tris, 0.1M Glycine, 20% Glycerol
Preservative	0.01% Thimerosal
Storage	Store as concentrated solution. Centrifuge briefly prior to opening vial. For short-term storage (1-2 weeks), store at 4°C. For long-term storage, aliquot and store at -20°C or below. Avoid multiple freeze-thaw cycles.
Concentration	1 mg/ml (Please refer to the vial label for the specific concentration.)
Immunogen	Recombinant protein encompassing a sequence within the center region of human Calcium binding protein p22. The exact sequence is proprietary.
Purification	Purified by antigen-affinity chromatography.
Conjugation	Unconjugated



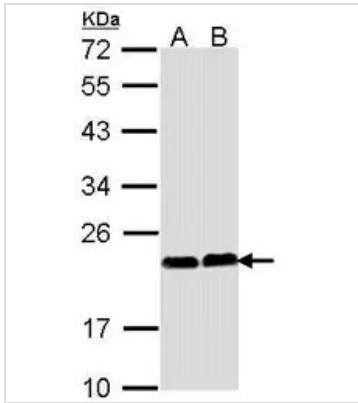
For full product information, images and publications, please visit our [website](#).

For laboratory research use only. Not for any clinical, therapeutic, or diagnostic use in humans or animals. Not for animal or human consumption.

Note

Purchasers shall not, and agree not to enable third parties to, analyze, copy, reverse engineer or otherwise attempt to determine the structure or sequence of the product.

DATA IMAGES



GTX113936 WB Image

Sample (30 µg of whole cell lysate)

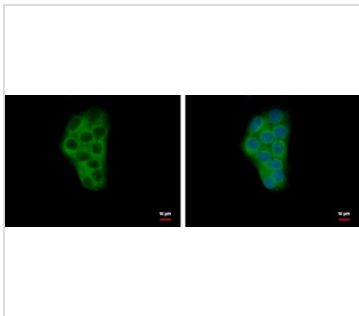
A: HeLa

B: HepG2 (GTX27900)

12% SDS PAGE

GTX113936 diluted at 1:1000

The HRP-conjugated anti-rabbit IgG antibody (GTX213110-01) was used to detect the primary antibody.



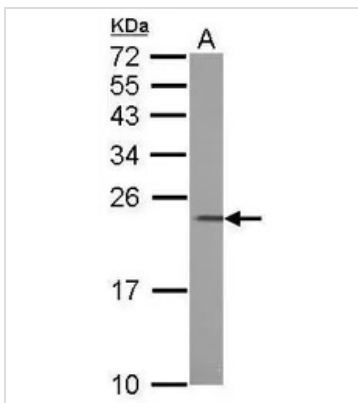
GTX113936 ICC/IF Image

Calcium binding protein P22 antibody detects Calcium binding protein P22 protein at cytoplasm by immunofluorescent analysis.

Sample: HepG2 cells were fixed in 4% paraformaldehyde at RT for 15 min.

Green: Calcium binding protein P22 protein stained by Calcium binding protein P22 antibody (GTX113936) diluted at 1:500.

Blue: Hoechst 33342 staining.



GTX113936 WB Image

Calcium binding protein P22 antibody detects CHP protein by western blot analysis.

A. 50 µg mouse liver lysate/extract

12% SDS-PAGE

Calcium binding protein P22 antibody (GTX113936) dilution: 1:1000

The HRP-conjugated anti-rabbit IgG antibody (GTX213110-01) was used to detect the primary antibody.



For full product information, images and publications, please visit our [website](#).