

BACE2 antibody [C1C3]

Cat. No. GTX113951

Host	Rabbit
Clonality	Polyclonal
Isotype	IgG
Applications	WB, ICC/IF, IHC-P
Reactivity	Human, Mouse, Rat

References (2)

Package

100 µl, 25 µl

Applications

Application Note

*Optimal dilutions/concentrations should be determined by the researcher.

Suggested dilution	Recommended dilution
WB	1:500-1:3000
ICC/IF	1:100-1:1000
IHC-P	1:100-1:1000

Not tested in other applications.

Calculated MW 56 kDa. ([Note](#))

Properties

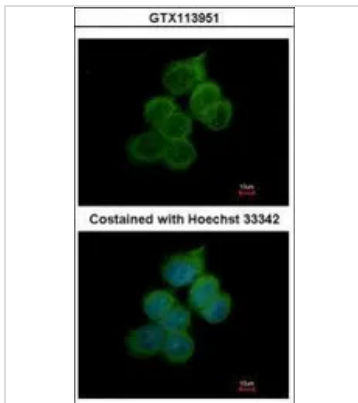
Form	Liquid
Buffer	0.1M Tris, 0.1M Glycine, 20% Glycerol
Preservative	0.01% Thimerosal
Storage	Store as concentrated solution. Centrifuge briefly prior to opening vial. For short-term storage (1-2 weeks), store at 4°C. For long-term storage, aliquot and store at -20°C or below. Avoid multiple freeze-thaw cycles.
Concentration	0.83 mg/ml (Please refer to the vial label for the specific concentration.)
Immunogen	Recombinant protein encompassing a sequence within the C-terminus region of human BACE2. The exact sequence is proprietary.
Purification	Purified by antigen-affinity chromatography.
Conjugation	Unconjugated

Note

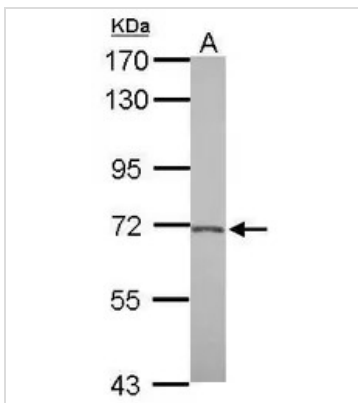
For laboratory research use only. Not for any clinical, therapeutic, or diagnostic use in humans or animals. Not for animal or human consumption.

Purchasers shall not, and agree not to enable third parties to, analyze, copy, reverse engineer or otherwise attempt to determine the structure or sequence of the product.

For full product information, images and publications, please visit our [website](#).

DATA IMAGES

GTx113951 ICC/IF Image

Immunofluorescence analysis of methanol-fixed A431, using BACE2(GTx113951) antibody at 1:500 dilution.

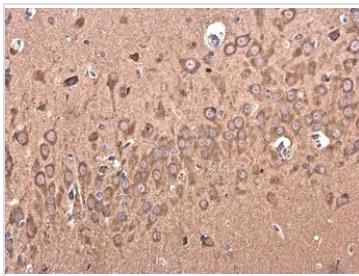

GTx113951 WB Image

Sample (30 ug of whole cell lysate)

A: Jurkat

7.5% SDS PAGE

GTx113951 diluted at 1:1000

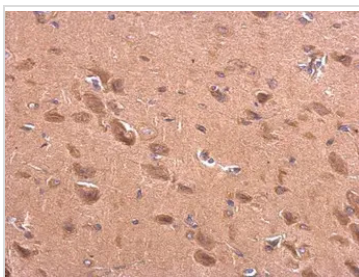

GTx113951 IHC-P Image

BACE2 antibody [C1C3] detects BACE2 protein at cytoplasm in Rat brain by immunohistochemical analysis.

Sample: Paraffin-embedded Rat brain.

BACE2 antibody [C1C3] (GTx113951) diluted at 1:500.

Antigen Retrieval: Citrate buffer, pH 6.0, 15 min


GTx113951 IHC-P Image

BACE2 antibody [C1C3] detects BACE2 protein at cytosol on rat fore brain by immunohistochemical analysis.

Sample: Paraffin-embedded rat fore brain.

BACE2 antibody [C1C3] (GTx113951) dilution: 1:500.

Antigen Retrieval: Trilogy™ (EDTA based, pH 8.0) buffer, 15min



For full product information, images and publications, please visit our [website](http://www.genetex.com).