

UHRF1 antibody

Cat. No. GTX113963

Host	Rabbit
Clonality	Polyclonal
Isotype	IgG
Application	WB, ICC/IF, IHC-P, IP, ChIP assay
Reactivity	Human, Mouse

Reference (4)

★★★★☆ Review (1)

Package

100 µl, 25 µl

APPLICATION

Application Note

*Optimal dilutions/concentrations should be determined by the researcher.

Suggested dilution	Recommended dilution
WB	1:500-1:3000
ICC/IF	1:100-1:1000
IHC-P	1:100-1:1000
IP	1:100-1:500
ChIP assay	Assay dependent

Not tested in other applications.

Calculated MW 90 kDa. ([Note](#))

PROPERTIES

Form	Liquid
Buffer	PBS, 20% Glycerol
Preservative	0.025% ProClin 300
Storage	Store as concentrated solution. Centrifuge briefly prior to opening vial. For short-term storage (1-2 weeks), store at 4°C. For long-term storage, aliquot and store at -20°C or below. Avoid multiple freeze-thaw cycles.
Concentration	1.35 mg/ml (Please refer to the vial label for the specific concentration.)
Immunogen	Recombinant protein encompassing a sequence within the C-terminus region of human UHRF1. The exact sequence is proprietary.
Purification	Purified by antigen-affinity chromatography.
Conjugation	Unconjugated

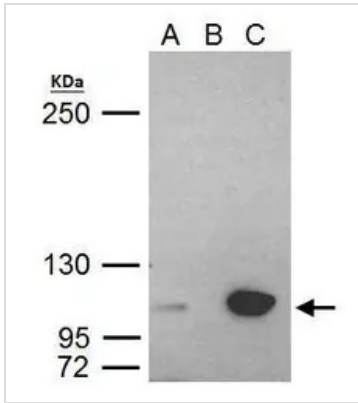


For full product information, images and publications, please visit our [website](#).

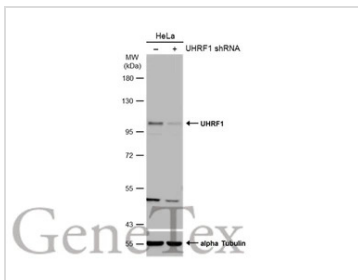
For laboratory research use only. Not for any clinical, therapeutic, or diagnostic use in humans or animals. Not for animal or human consumption.

Note

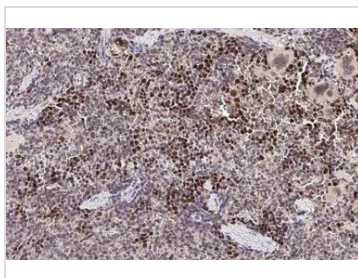
Purchasers shall not, and agree not to enable third parties to, analyze, copy, reverse engineer or otherwise attempt to determine the structure or sequence of the product.

DATA IMAGES

GTx113963 IP Image

UHRF1 antibody immunoprecipitates UHRF1 protein in IP experiments. IP Sample: HeLa whole cell lysate/extract A. 40 μ g HeLa whole cell lysate/extract B. Control with 2 μ g of preimmune rabbit IgG C. Immunoprecipitation of UHRF1 protein by 2 μ g of UHRF1 antibody (GTx113963) 5% SDS-PAGE The immunoprecipitated UHRF1 protein was detected by UHRF1 antibody (GTx113963) diluted at 1:1000. EasyBlot anti-rabbit IgG (GTx221666-01) was used as a secondary reagent.


GTx113963 WB Image

Non-transfected (–) and transfected (+) HeLa whole cell extracts (50 μ g) were separated by 7.5% SDS-PAGE, and the membrane was blotted with UHRF1 antibody (GTx113963) diluted at 1:500. The HRP-conjugated anti-rabbit IgG antibody (GTx213110-01) was used to detect the primary antibody.

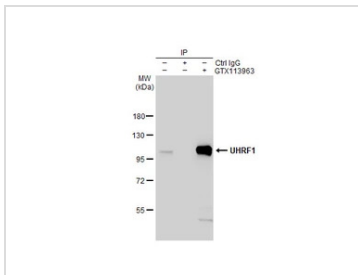

GTx113963 IHC-P Image

UHRF1 antibody detects UHRF1 protein at nucleus by immunohistochemical analysis.

Sample: Paraffin-embedded mouse spleen.

UHRF1 stained by UHRF1 antibody (GTx113963) diluted at 1:500.

Antigen Retrieval: Citrate buffer, pH 6.0, 15 min


GTx113963 IP Image

Immunoprecipitation of UHRF1 protein from HeLa whole cell extract using 5 μ g of UHRF1 antibody (GTx113963).

Western blot analysis was performed using UHRF1 antibody (GTx113963).

EasyBlot HRP-conjugated anti rabbit IgG antibody (GTx221666-01).



For full product information, images and publications, please visit our [website](https://www.genetex.com).