

EGFR antibody [ICR10] (FITC)

Cat. No. GTX11400

Host	Rat
Clonality	Monoclonal
Isotype	IgG2a
Applications	ICC/IF, FCM
Reactivity	Human

References (12)

Package

50 µg

Applications

Application Note

*Optimal dilutions/concentrations should be determined by the researcher.

Suggested dilution	Recommended dilution
ICC/IF	Assay dependent
FCM	1/10

Note : Use 10µl of the suggested working dilution to label 10⁶ cells in 100µl.

Not tested in other applications.

Product Note This antibody, clone ICR10 binds to epitope B from EGFR

Properties

Form	Liquid
Buffer	PBS, 1% BSA
Preservative	0.09% Sodium azide
Storage	Store as concentrated solution. Centrifuge briefly prior to opening vial. For short-term storage (1-2 weeks), store at 4°C. For long-term storage, aliquot and store at -20°C or below. Avoid multiple freeze-thaw cycles. Protect from light.
Concentration	0.1 mg/ml (Please refer to the vial label for the specific concentration.)
Immunogen	Extracellular domain of human EGF-receptor from head and neck carcinoma.
Purification	Purified by ion exchange chromatography
Conjugation	Fluorescein isothiocyanate (FITC) Wavelength

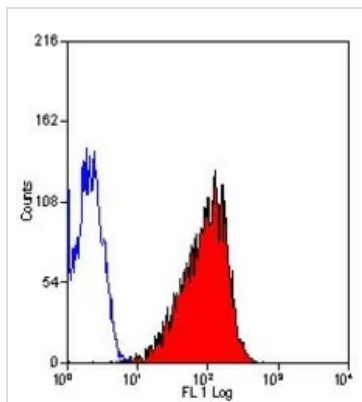
Note

For laboratory research use only. Not for any clinical, therapeutic, or diagnostic use in humans or animals. Not for animal or human consumption.

Purchasers shall not, and agree not to enable third parties to, analyze, copy, reverse engineer or otherwise attempt to determine the structure or sequence of the product.

For full product information, images and publications, please visit our [website](#).

DATA IMAGES

**GTX11400 FCM Image**

FACS analysis of A431 cells using GTX11400 EGFR antibody [ICR10] (FITC).



For full product information, images and publications, please visit our [website](#).