

COMT antibody

Cat. No. GTX114062

Host	Rabbit
Clonality	Polyclonal
Isotype	IgG
Applications	WB, IHC-P
Reactivity	Human, Rat

Package
100 µl, 25 µl

Applications

Application Note

*Optimal dilutions/concentrations should be determined by the researcher.

Suggested dilution	Recommended dilution
WB	1:500-1:3000
IHC-P	1:100-1:1000

Not tested in other applications.

Calculated MW 30 kDa. ([Note](#))

Properties

Form	Liquid
Buffer	0.1M Tris, 0.1M Glycine, 20% Glycerol
Preservative	0.01% Thimerosal
Storage	Store as concentrated solution. Centrifuge briefly prior to opening vial. For short-term storage (1-2 weeks), store at 4°C. For long-term storage, aliquot and store at -20°C or below. Avoid multiple freeze-thaw cycles.
Concentration	0.52 mg/ml (Please refer to the vial label for the specific concentration.)
Immunogen	Recombinant protein encompassing a sequence within the Extracellular domain of human COMT. The exact sequence is proprietary.
Purification	Purified by antigen-affinity chromatography.
Conjugation	Unconjugated

Note

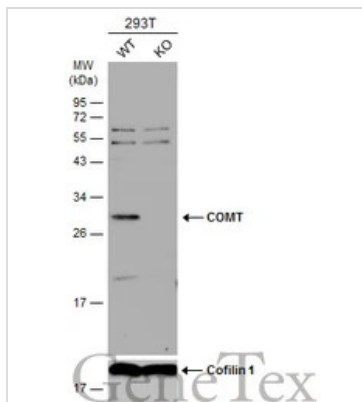
For laboratory research use only. Not for any clinical, therapeutic, or diagnostic use in humans or animals. Not for animal or human consumption.

Purchasers shall not, and agree not to enable third parties to, analyze, copy, reverse engineer or otherwise attempt to determine the structure or sequence of the product.



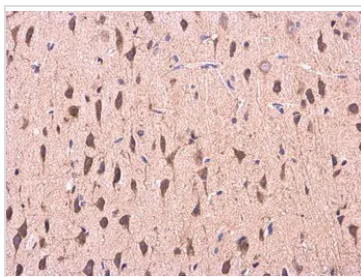
For full product information, images and publications, please visit our [website](#).

DATA IMAGES



GTx114062 WB Image

Wild-type (WT) and COMT knockout (KO) HEK293T cell extracts (30 µg) were separated by 12% SDS-PAGE, and the membrane was blotted with COMT antibody (GTx114062) diluted at 1:500. The HRP-conjugated anti-rabbit IgG antibody (GTx213110-01) was used to detect the primary antibody.



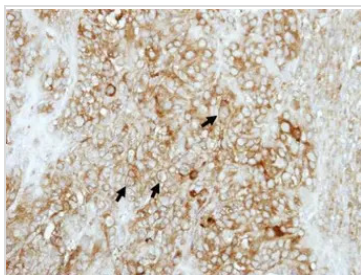
GTx114062 IHC-P Image

COMT antibody detects COMT protein at cytoplasm in Rat brain by immunohistochemical analysis.

Sample: Paraffin-embedded Rat brain.

COMT antibody (GTx114062) diluted at 1:500.

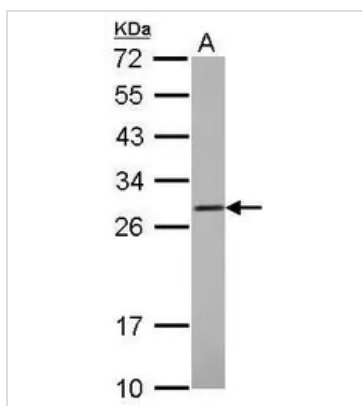
Antigen Retrieval: Citrate buffer, pH 6.0, 15 min



GTx114062 IHC-P Image

Immunohistochemical analysis of paraffin-embedded DLD1 xenograft, using COMT(GTx114062) antibody at 1:500 dilution.

Antigen Retrieval: Trilogy™ (EDTA based, pH 8.0) buffer, 15min



GTx114062 WB Image

COMT antibody detects COMT protein by Western blot analysis.

A. 30 µg K562 whole cell lysate/extract

12 % SDS-PAGE

COMT antibody (GTx114062) dilution: 1:1000



For full product information, images and publications, please visit our [website](https://www.genetex.com).