

Rhotekin antibody

Cat. No. GTX114161

Host	Rabbit
Clonality	Polyclonal
Isotype	IgG
Applications	WB, ICC/IF
Reactivity	Human, Mouse

References (1)

Package

100 µl, 25 µl

Applications

Application Note

*Optimal dilutions/concentrations should be determined by the researcher.

Suggested dilution	Recommended dilution
WB	1:1000-1:10000
ICC/IF	1:100-1:1000

Note : suggest to fix with methanol, not recommend to fix with PFA

Not tested in other applications.

Calculated MW 63 kDa. ([Note](#))

Properties

Form	Liquid
Buffer	0.1M Tris, 0.1M Glycine, 20% Glycerol
Preservative	0.01% Thimerosal
Storage	Store as concentrated solution. Centrifuge briefly prior to opening vial. For short-term storage (1-2 weeks), store at 4°C. For long-term storage, aliquot and store at -20°C or below. Avoid multiple freeze-thaw cycles.
Concentration	0.54 mg/ml (Please refer to the vial label for the specific concentration.)
Immunogen	Recombinant protein encompassing a sequence within the N-terminus region of human Rhotekin. The exact sequence is proprietary.
Purification	Purified by antigen-affinity chromatography.
Conjugation	Unconjugated

Note

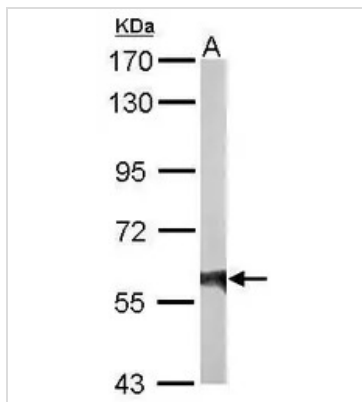
For laboratory research use only. Not for any clinical, therapeutic, or diagnostic use in humans or animals. Not for animal or human consumption.

Purchasers shall not, and agree not to enable third parties to, analyze, copy, reverse engineer or otherwise attempt to determine the structure or sequence of the product.



For full product information, images and publications, please visit our [website](#).

DATA IMAGES



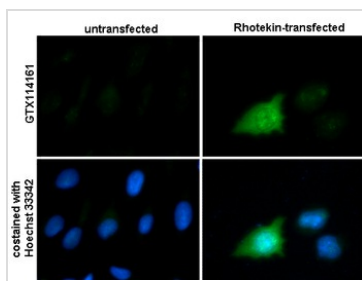
GTx114161 WB Image

Sample (20 ug of whole cell lysate)

A: mouse brain

7.5% SDS PAGE

GTx114161 diluted at 1:10000



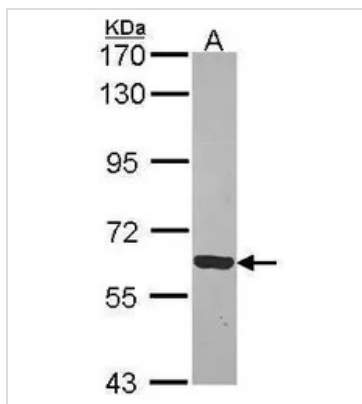
GTx114161 ICC/IF Image

Rhotekin antibody detects Rhotekin protein at cytoplasm by immunofluorescent analysis.

Sample: Rhotekin-transfected (right) or untransfected (left) HeLa cells were fixed in ice-cold MeOH for 5 min.

Green: Rhotekin protein stained by Rhotekin antibody (GTx114161) diluted at 1:500.

Blue: Hoechst 33342 staining.



GTx114161 WB Image

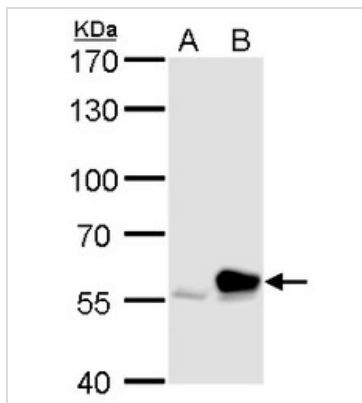
Sample (30 ug of whole cell lysate)

A: JurKat

7.5% SDS PAGE

Rhotekin antibody

GTx114161 diluted at 1:1000



GTx114161 WB Image

Rhotekin antibody detects Rhotekin protein by western blot analysis.

A. 30 μ g 293T whole cell lysate/extract

B. 30 μ g whole cell lysate/extract of human Rhotekin-transfected 293T cells

7.5 % SDS-PAGE

Rhotekin antibody (GTx114161) dilution: 1:5000



For full product information, images and publications, please visit our [website](https://www.genetex.com).