

## Renin Receptor antibody [N3C3]

Cat. No. GTX114169

Host	Rabbit
Clonality	Polyclonal
Isotype	IgG
Applications	WB, ICC/IF
Reactivity	Human, Mouse, Rat

References ( 7 )

★★★★★ Review ( 1 )

Package

100 µl, 25 µl

## Applications

## Application Note

\*Optimal dilutions/concentrations should be determined by the researcher.

Suggested dilution	Recommended dilution
WB	1:500-1:3000
ICC/IF	1:100-1:1000

Not tested in other applications.

**Calculated MW** 39 kDa. ( [Note](#) )

**Product Note** KO/KD validation is based on published data (PMID: 31452834).

## Properties

Form	Liquid
Buffer	PBS, 20% Glycerol
Preservative	0.025% ProClin 300
Storage	Store as concentrated solution. Centrifuge briefly prior to opening vial. For short-term storage (1-2 weeks), store at 4°C. For long-term storage, aliquot and store at -20°C or below. Avoid multiple freeze-thaw cycles.
Concentration	1.38 mg/ml (Please refer to the vial label for the specific concentration.)
Immunogen	Recombinant protein encompassing a sequence within the center region of human Renin Receptor. The exact sequence is proprietary.
Purification	Purified by antigen-affinity chromatography.
Conjugation	Unconjugated

## Note

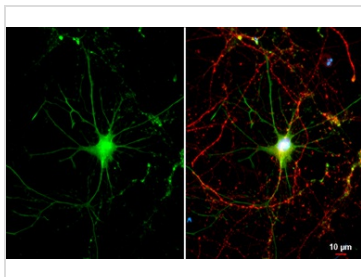
For laboratory research use only. Not for any clinical, therapeutic, or diagnostic use in humans or animals. Not for animal or human consumption.

Purchasers shall not, and agree not to enable third parties to, analyze, copy, reverse engineer or otherwise attempt to determine the structure or sequence of the product.



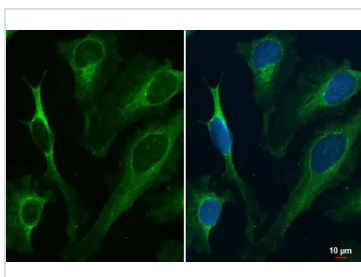
For full product information, images and publications, please visit our [website](#).

## DATA IMAGES



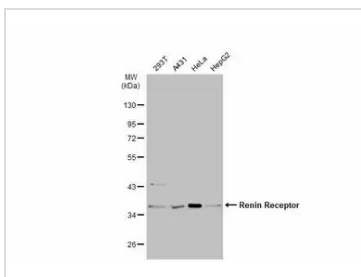
### GTx114169 ICC/IF Image

Renin Receptor antibody [N3C3] detects Renin Receptor protein by immunofluorescent analysis.  
 Sample: DIV9 rat hippocampal neuron cells were fixed in 4% paraformaldehyde at RT for 15 min.  
 Green: Renin Receptor stained by Renin Receptor antibody [N3C3] (GTx114169) diluted at 1:500.  
 Red: Tau, an axon marker, stained by Tau antibody [GT287] (GTx634809) diluted at 1:500.  
 Blue: Fluoroshield with DAPI (GTx30920).



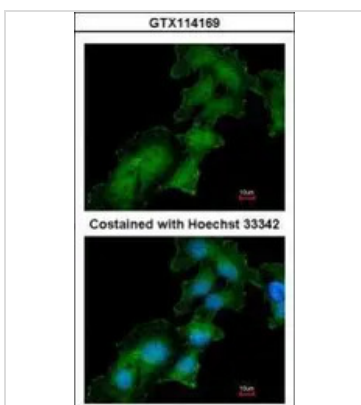
### GTx114169 ICC/IF Image

Renin Receptor antibody detects Renin Receptor protein at endoplasmic reticulum by immunofluorescent analysis.  
 Sample: HeLa cells were fixed in ice-cold MeOH for 5 min.  
 Green: Renin Receptor stained by Renin Receptor antibody (GTx114169) diluted at 1:500.



### GTx114169 WB Image

Various whole cell extracts (30 µg) were separated by 10% SDS-PAGE, and the membrane was blotted with Renin Receptor antibody [N3C3] (GTx114169) diluted at 1:1000. The HRP-conjugated anti-rabbit IgG antibody (GTx213110-01) was used to detect the primary antibody.



### GTx114169 ICC/IF Image

Immunofluorescence analysis of methanol-fixed HepG2, using Renin Receptor (GTx114169) antibody at 1:200 dilution.



For full product information, images and publications, please visit our [website](https://www.genetex.com).