

Renin Receptor antibody [N3C3]

Cat. No. GTX114169

| | |
|---------------------|-------------------|
| Host | Rabbit |
| Clonality | Polyclonal |
| Isotype | IgG |
| Applications | WB, ICC/IF |
| Reactivity | Human, Mouse, Rat |

References (7)

★★★★★ Review (1)

Package

100 µl, 25 µl

Applications

Application Note

*Optimal dilutions/concentrations should be determined by the researcher.

| Suggested dilution | Recommended dilution |
|--------------------|----------------------|
| WB | 1:500-1:3000 |
| ICC/IF | 1:100-1:1000 |

Not tested in other applications.

Calculated MW 39 kDa. ([Note](#))**Product Note** KO/KD validation is based on published data (PMID: 31452834).

Properties

| | |
|----------------------|--|
| Form | Liquid |
| Buffer | PBS, 20% Glycerol |
| Preservative | 0.025% ProClin 300 |
| Storage | Store as concentrated solution. Centrifuge briefly prior to opening vial. For short-term storage (1-2 weeks), store at 4°C. For long-term storage, aliquot and store at -20°C or below. Avoid multiple freeze-thaw cycles. |
| Concentration | 1.38 mg/ml (Please refer to the vial label for the specific concentration.) |
| Immunogen | Recombinant protein encompassing a sequence within the center region of human Renin Receptor. The exact sequence is proprietary. |
| Purification | Purified by antigen-affinity chromatography. |
| Conjugation | Unconjugated |

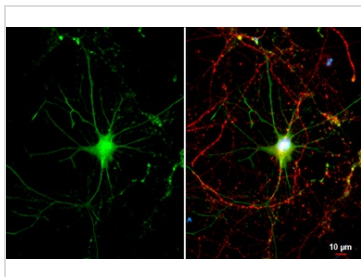
Note

For laboratory research use only. Not for any clinical, therapeutic, or diagnostic use in humans or animals. Not for animal or human consumption.

Purchasers shall not, and agree not to enable third parties to, analyze, copy, reverse engineer or otherwise attempt to determine the structure or sequence of the product.

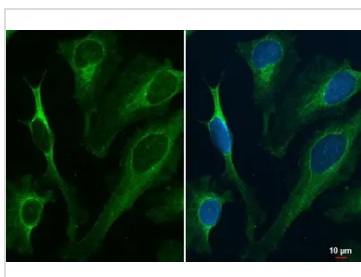
For full product information, images and publications, please visit our [website](#).

DATA IMAGES



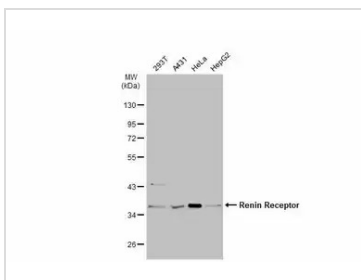
GTX114169 ICC/IF Image

Renin Receptor antibody [N3C3] detects Renin Receptor protein by immunofluorescent analysis.
 Sample: DIV9 rat hippocampal neuron cells were fixed in 4% paraformaldehyde at RT for 15 min.
 Green: Renin Receptor stained by Renin Receptor antibody [N3C3] (GTX114169) diluted at 1:500.
 Red: Tau, an axon marker, stained by Tau antibody [GT287] (GTX634809) diluted at 1:500.
 Blue: Fluoroshield with DAPI (GTX30920).



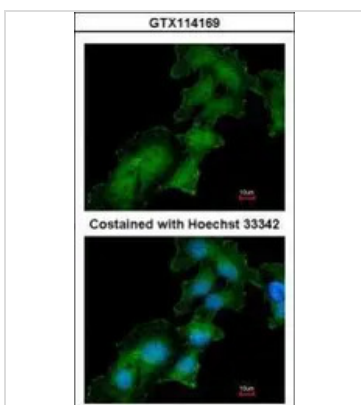
GTX114169 ICC/IF Image

Renin Receptor antibody detects Renin Receptor protein at endoplasmic reticulum by immunofluorescent analysis.
 Sample: HeLa cells were fixed in ice-cold MeOH for 5 min.
 Green: Renin Receptor stained by Renin Receptor antibody (GTX114169) diluted at 1:500.



GTX114169 WB Image

Various whole cell extracts (30 µg) were separated by 10% SDS-PAGE, and the membrane was blotted with Renin Receptor antibody [N3C3] (GTX114169) diluted at 1:1000. The HRP-conjugated anti-rabbit IgG antibody (GTX213110-01) was used to detect the primary antibody.



GTX114169 ICC/IF Image

Immunofluorescence analysis of methanol-fixed HepG2, using Renin Receptor (GTX114169) antibody at 1:200 dilution.



For full product information, images and publications, please visit our [website](#).