

UBE2A antibody

Cat. No. GTX114186

Host	Rabbit
Clonality	Polyclonal
Isotype	IgG
Applications	WB, ICC/IF
Reactivity	Human, Mouse

Package
100 µl, 25 µl

Applications

Application Note

*Optimal dilutions/concentrations should be determined by the researcher.

Suggested dilution	Recommended dilution
WB	1:500-1:3000
ICC/IF	1:100-1:1000

Not tested in other applications.

Calculated MW 17 kDa. ([Note](#))

Product Note Specificity: Based on sequence homology, this antibody may cross react with UBE2B protein.

Properties

Form	Liquid
Buffer	0.1M Tris, 0.1M Glycine, 20% Glycerol; 1% BSA
Preservative	0.01% Thimerosal
Storage	Store as concentrated solution. Centrifuge briefly prior to opening vial. For short-term storage (1-2 weeks), store at 4°C. For long-term storage, aliquot and store at -20°C or below. Avoid multiple freeze-thaw cycles.
Concentration	0.3 mg/ml (Please refer to the vial label for the specific concentration.)
Immunogen	Recombinant protein encompassing a sequence within the center region of human UBE2A. The exact sequence is proprietary.
Purification	Purified by antigen-affinity chromatography.
Conjugation	Unconjugated

Note

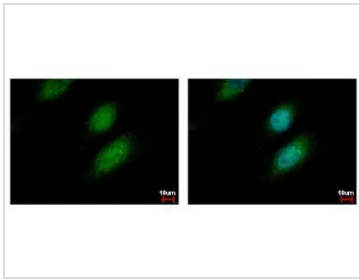
For laboratory research use only. Not for any clinical, therapeutic, or diagnostic use in humans or animals. Not for animal or human consumption.

Purchasers shall not, and agree not to enable third parties to, analyze, copy, reverse engineer or otherwise attempt to determine the structure or sequence of the product.



For full product information, images and publications, please visit our [website](#).

DATA IMAGES



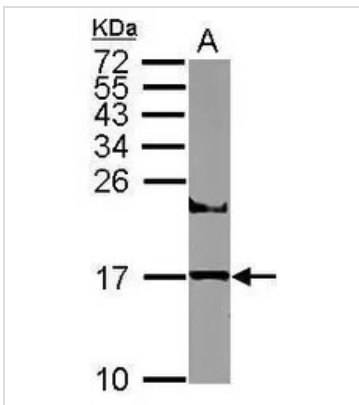
GTX114186 ICC/IF Image

UBE2A antibody detects UBE2A protein at cytoplasm and nucleus by immunofluorescent analysis.

Sample: HeLa cells were fixed in 4% paraformaldehyde at RT for 15 min.

Green: UBE2A protein stained by UBE2A antibody (GTX114186) diluted at 1:500.

Blue: Hoechst 33342 staining.



GTX114186 WB Image

Sample (50 ug of whole cell lysate)

A: mouse brain

15% SDS PAGE

GTX114186 diluted at 1:500



For full product information, images and publications, please visit our [website](#).