

Glutathione Reductase antibody [N2C2], Internal

Cat. No. GTX114199

Host	Rabbit
Clonality	Polyclonal
Isotype	IgG
Applications	WB, IHC-P, EM
Reactivity	Human, Mouse, Rat

References (16)

★★★★★ Review (1)

Package

100 µl, 25 µl

Applications

Application Note

*Optimal dilutions/concentrations should be determined by the researcher.

Suggested dilution	Recommended dilution
WB	1:500-1:3000
IHC-P	1:100-1:1000
EM	Assay dependent

Not tested in other applications.

Calculated MW	56 kDa. (Note)
Product Note	KO/KD validation is based on published data (PMID: 24405781).

Properties

Form	Liquid
Buffer	PBS, 20% Glycerol
Preservative	0.025% ProClin 300
Storage	Store as concentrated solution. Centrifuge briefly prior to opening vial. For short-term storage (1-2 weeks), store at 4°C. For long-term storage, aliquot and store at -20°C or below. Avoid multiple freeze-thaw cycles.
Concentration	1.21 mg/ml (Please refer to the vial label for the specific concentration.)
Immunogen	Recombinant protein encompassing a sequence within the center region of human Glutathione Reductase. The exact sequence is proprietary.
Purification	Purified by antigen-affinity chromatography.
Conjugation	Unconjugated



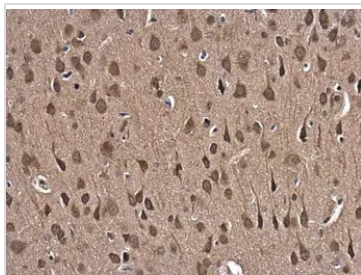
For full product information, images and publications, please visit our [website](#).

For laboratory research use only. Not for any clinical, therapeutic, or diagnostic use in humans or animals. Not for animal or human consumption.

Note

Purchasers shall not, and agree not to enable third parties to, analyze, copy, reverse engineer or otherwise attempt to determine the structure or sequence of the product.

DATA IMAGES



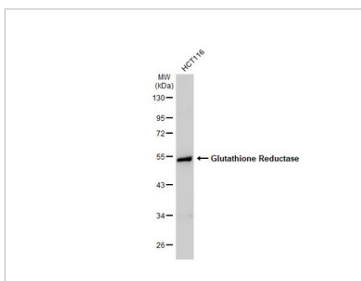
GTX114199 IHC-P Image

Glutathione reductase antibody [N2C2], Internal detects Glutathione reductase protein at cytoplasm and nucleus in rat brain by immunohistochemical analysis.

Sample: Paraffin-embedded rat brain.

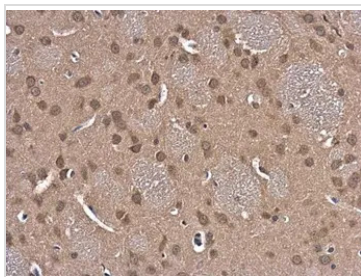
Glutathione reductase antibody [N2C2], Internal (GTX114199) diluted at 1:500.

Antigen Retrieval: Citrate buffer, pH 6.0, 15 min



GTX114199 WB Image

Whole cell extract (30 µg) was separated by 10% SDS-PAGE, and the membrane was blotted with Glutathione Reductase antibody [N2C2], Internal (GTX114199) diluted at 1:1000. The HRP-conjugated anti-rabbit IgG antibody (GTX213110-01) was used to detect the primary antibody.



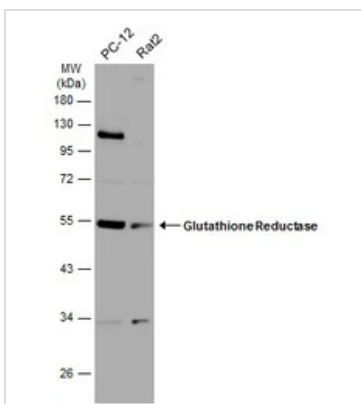
GTX114199 IHC-P Image

Glutathione reductase antibody [N2C2], Internal detects Glutathione reductase protein at cytoplasm and nucleus in rat brain by immunohistochemical analysis.

Sample: Paraffin-embedded rat brain.

Glutathione reductase antibody [N2C2], Internal (GTX114199) diluted at 1:500.

Antigen Retrieval: Citrate buffer, pH 6.0, 15 min



GTX114199 WB Image

Various whole cell extracts (30 µg) were separated by 10% SDS-PAGE, and the membrane was blotted with Glutathione Reductase antibody (GTX114199) diluted at 1:1000. The HRP-conjugated anti-rabbit IgG antibody (GTX213110-01) was used to detect the primary antibody.



For full product information, images and publications, please visit our [website](https://www.genetex.com).