

ERP29 antibody

Cat. No. GTX11420

Host	Rabbit
Clonality	Polyclonal
Isotype	IgG
Applications	WB, ICC/IF, IP
Reactivity	Human, Mouse, Rat, Bovine, Dog, Hamster, Guinea pig, Primate

References (1)

Package

50 µl

Applications

Application Note

*Optimal dilutions/concentrations should be determined by the researcher.

Suggested dilution	Recommended dilution
WB	1:2,500
ICC/IF	1:500
IP	1:500

Not tested in other applications.

Calculated MW 29 kDa. ([Note](#))

Product Note Immunofluorescence data demonstrates that ERp29 is localized to the ER of rat thyrocytes.

Properties

Form	Liquid
Buffer	Serum
Preservative	0.02% Sodium azide
Storage	Store as concentrated solution. Centrifuge briefly prior to opening vial. For short-term storage (1-2 weeks), store at 4°C. For long-term storage, aliquot and store at -20°C or below. Avoid multiple freeze-thaw cycles.
Immunogen	6-histidine epitope tagged full length recombinant rat ERp29.
Purification	Unpurified
Conjugation	Unconjugated

Note

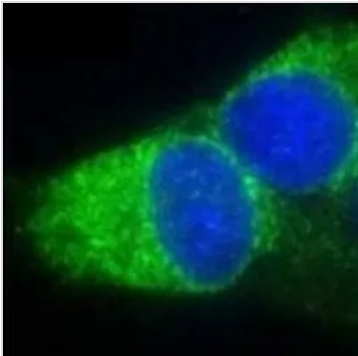
For laboratory research use only. Not for any clinical, therapeutic, or diagnostic use in humans or animals. Not for animal or human consumption.

Purchasers shall not, and agree not to enable third parties to, analyze, copy, reverse engineer or otherwise attempt to determine the structure or sequence of the product.



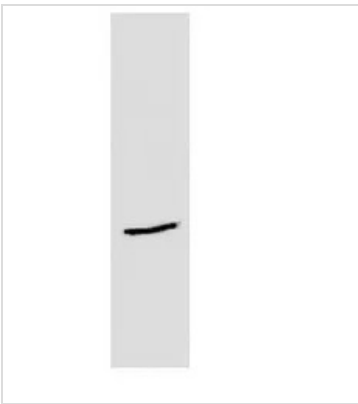
For full product information, images and publications, please visit our [website](#).

DATA IMAGES



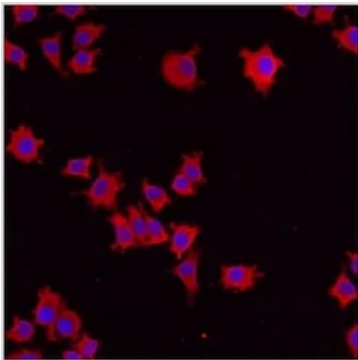
GTX11420 ICC/IF Image

ICC/IF analysis of rat thyrocytes using GTX11420 ERP29 antibody.



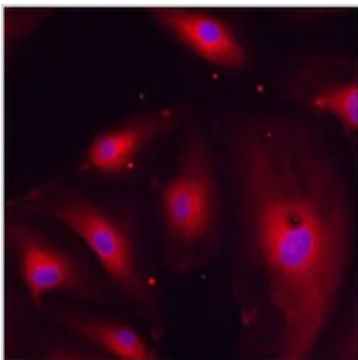
GTX11420 WB Image

WB analysis of HEK cell lysate using GTX11420 ERP29 antibody.



GTX11420 ICC/IF Image

ICC/IF analysis of NS-1 Cells using GTX11420 ERP29 antibody.



GTX11420 ICC/IF Image

ICC/IF analysis of HMVEC Cells using GTX11420 ERP29 antibody.



For full product information, images and publications, please visit our [website](#).