

RALA antibody

Cat. No. GTX114204

Host	Rabbit
Clonality	Polyclonal
Isotype	IgG
Applications	WB
Reactivity	Human, Mouse, Rat, Frog, Squirrel

References (2)

Package

100 µl, 25 µl

Applications

Application Note

*Optimal dilutions/concentrations should be determined by the researcher.

Suggested dilution	Recommended dilution
WB	1:500-1:3000
Not tested in other applications.	

Calculated MW 24 kDa. ([Note](#))

Properties

Form	Liquid
Buffer	0.1M Tris, 0.1M Glycine, 20% Glycerol
Preservative	0.01% Thimerosal
Storage	Store as concentrated solution. Centrifuge briefly prior to opening vial. For short-term storage (1-2 weeks), store at 4°C. For long-term storage, aliquot and store at -20°C or below. Avoid multiple freeze-thaw cycles.
Concentration	0.55 mg/ml (Please refer to the vial label for the specific concentration.)
Immunogen	Recombinant protein encompassing a sequence within the center region of human RALA. The exact sequence is proprietary.
Purification	Purified by antigen-affinity chromatography.
Conjugation	Unconjugated

Note

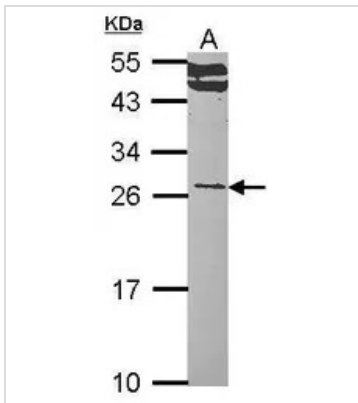
For laboratory research use only. Not for any clinical, therapeutic, or diagnostic use in humans or animals. Not for animal or human consumption.

Purchasers shall not, and agree not to enable third parties to, analyze, copy, reverse engineer or otherwise attempt to determine the structure or sequence of the product.



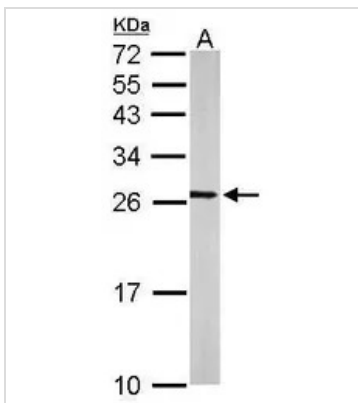
For full product information, images and publications, please visit our [website](#).

DATA IMAGES



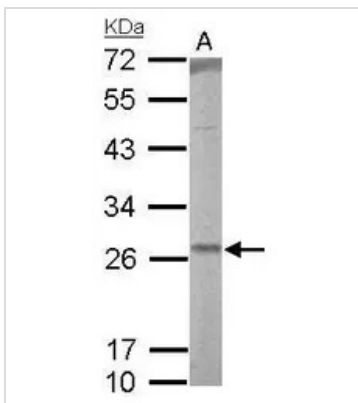
GTX114204 WB Image

Sample (30 ug of whole cell lysate)
 A: Hep G2 (GTX27900)
 12% SDS PAGE
 RALA antibody
 GTX114204 diluted at 1:1000



GTX114204 WB Image

Sample (50 ug of whole cell lysate)
 A: mouse brain
 12% SDS PAGE
 GTX114204 diluted at 1:500



GTX114204 WB Image

RALA antibody detects RALA protein by Western blot analysis.
 A. 50 µg rat lung lysate/extract
 12 % SDS-PAGE
 RALA antibody (GTX114204) dilution: 1:1000



For full product information, images and publications, please visit our [website](https://www.genetex.com).