

TDP43 antibody

Cat. No. GTX114210

Host	Rabbit
Clonality	Polyclonal
Isotype	IgG
Applications	WB, ICC/IF, IHC-P, IP, ChIP-seq, RIP
Reactivity	Human, Mouse, Rat

References (7)

Package

100 µl, 25 µl

Applications

Application Note

*Optimal dilutions/concentrations should be determined by the researcher.

Suggested dilution	Recommended dilution
WB	1:500-1:3000
ICC/IF	1:100-1:1000
IHC-P	1:100-1:1000
IP	1:100-1:1000
ChIP-seq	Assay dependent
RIP	Assay dependent

Note : target validated by Mass Spectrometry

Not tested in other applications.

Calculated MW 45 kDa. ([Note](#))

Properties

Form	Liquid
Buffer	PBS, 20% Glycerol
Preservative	0.025% ProClin 300
Storage	Store as concentrated solution. Centrifuge briefly prior to opening vial. For short-term storage (1-2 weeks), store at 4°C. For long-term storage, aliquot and store at -20°C or below. Avoid multiple freeze-thaw cycles.
Concentration	0.63 mg/ml (Please refer to the vial label for the specific concentration.)
Immunogen	Recombinant protein encompassing a sequence within the center region of human TDP43. The exact sequence is proprietary.
Purification	Purified by antigen-affinity chromatography.
Conjugation	Unconjugated

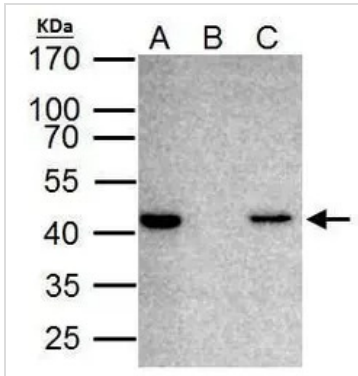


For full product information, images and publications, please visit our [website](#).

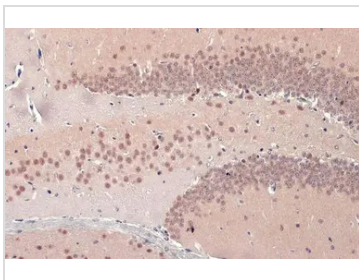
For laboratory research use only. Not for any clinical, therapeutic, or diagnostic use in humans or animals. Not for animal or human consumption.

Note

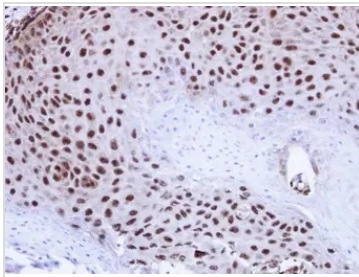
Purchasers shall not, and agree not to enable third parties to, analyze, copy, reverse engineer or otherwise attempt to determine the structure or sequence of the product.

DATA IMAGES

GTX114210 IP Image

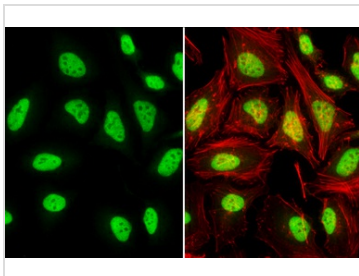
TARDDBP antibody immunoprecipitates TARDDBP protein in IP experiments. IP Sample: HeLa whole cell lysate/extract A. 40 µg HeLa whole cell lysate/extract B. Control with 2 µg of preimmune rabbit IgG C. Immunoprecipitation of TARDDBP protein by 2 µg of TARDDBP antibody (GTX114210) 12% SDS-PAGE The immunoprecipitated TARDDBP protein was detected by TARDDBP antibody (GTX114210) diluted at 1:1000. EasyBlot anti-rabbit IgG (GTX221666-01) was used as a secondary reagent.


GTX114210 IHC-P Image

TDP43 antibody detects TDP43 protein at nucleus by immunohistochemical analysis. Sample: Paraffin-embedded mouse brain. TDP43 stained by TDP43 antibody (GTX114210) diluted at 1:500. Antigen Retrieval: Citrate buffer, pH 6.0, 15 min


GTX114210 IHC-P Image

Immunohistochemical analysis of paraffin-embedded Cal27 Xenograft , using TDP-43(GTX114210) antibody at 1:100 dilution. Antigen Retrieval: Trilogy™ (EDTA based, pH 8.0) buffer, 15min


GTX114210 ICC/IF Image

TDP43 antibody detects TDP43 protein at nucleus by immunofluorescent analysis. Sample: HeLa cells were fixed in 4% paraformaldehyde at RT for 15 min. Green: TDP43 stained by TDP43 antibody (GTX114210) diluted at 1:2000. Red: phalloidin, a cytoskeleton marker, diluted at 1:200.



For full product information, images and publications, please visit our [website](https://www.genetex.com).