

## ACAA1 antibody

Cat. No. GTX114230

Host	Rabbit
Clonality	Polyclonal
Isotype	IgG
Applications	WB, ICC/IF, IHC-P
Reactivity	Human, Mouse

Package  
100 µl, 25 µl

## Applications

## Application Note

\*Optimal dilutions/concentrations should be determined by the researcher.

Suggested dilution	Recommended dilution
WB	1:500-1:3000
ICC/IF	1:100-1:1000
IHC-P	1:100-1:1000

Not tested in other applications.

Calculated MW 44 kDa. ( [Note](#) )

## Properties

Form	Liquid
Buffer	0.1M Tris, 0.1M Glycine, 20% Glycerol
Preservative	0.01% Thimerosal
Storage	Store as concentrated solution. Centrifuge briefly prior to opening vial. For short-term storage (1-2 weeks), store at 4°C. For long-term storage, aliquot and store at -20°C or below. Avoid multiple freeze-thaw cycles.
Concentration	0.31 mg/ml (Please refer to the vial label for the specific concentration.)
Immunogen	Recombinant protein encompassing a sequence within the center region of human ACAA1. The exact sequence is proprietary.
Purification	Purified by antigen-affinity chromatography.
Conjugation	Unconjugated

## Note

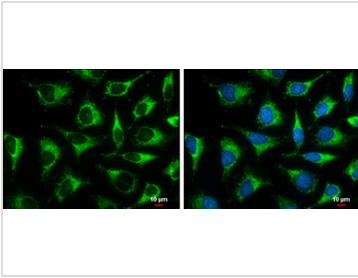
For laboratory research use only. Not for any clinical, therapeutic, or diagnostic use in humans or animals. Not for animal or human consumption.

Purchasers shall not, and agree not to enable third parties to, analyze, copy, reverse engineer or otherwise attempt to determine the structure or sequence of the product.



For full product information, images and publications, please visit our [website](#).

## DATA IMAGES



### GTx114230 ICC/IF Image

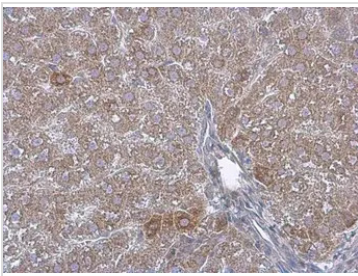
ACAA1 antibody detects ACAA1 protein at mitochondria by immunofluorescent analysis.

Sample: HeLa cells were fixed in ice-cold MeOH for 5 min.

Green: ACAA1 protein stained by ACAA1 antibody (GTx114230) diluted at 1:500.

Blue: Hoechst 33342 staining.

Scale bar = 10 μm.



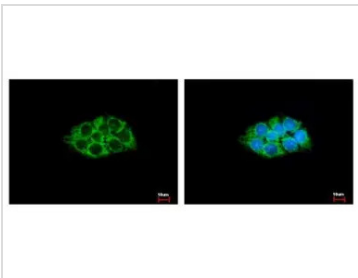
### GTx114230 IHC-P Image

ACAA1 antibody detects ACAA1 protein at cytoplasm by immunohistochemical analysis.

Sample: Paraffin-embedded mouse liver.

ACAA1 stained by ACAA1 antibody (GTx114230) diluted at 1:500.

Antigen Retrieval: Citrate buffer, pH 6.0, 15 min



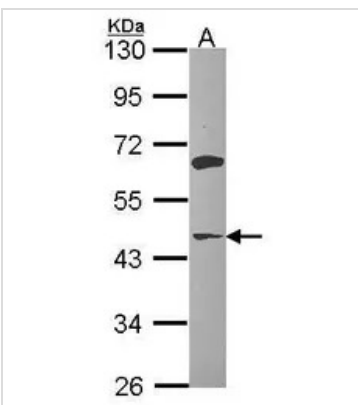
### GTx114230 ICC/IF Image

ACAA1 antibody detects ACAA1 protein at Peroxisome by immunofluorescent analysis.

Sample: HepG2 cells were fixed in -20°C 100% MeOH for 5 min.

Green: ACAA1 protein stained by ACAA1 antibody (GTx114230) diluted at 1:500.

Blue: Hoechst 33343 staining.



### GTx114230 WB Image

Sample (30 ug of whole cell lysate)

A: Hep G2 (GTx27900)

10% SDS PAGE

ACAA1 antibody

GTx114230 diluted at 1:1000



For full product information, images and publications, please visit our [website](https://www.genetex.com).