

EDG1 antibody

Cat. No. GTX11424

Host	Rabbit
Clonality	Polyclonal
Isotype	IgG
Applications	WB, ICC/IF, IHC-Fr, FCM, IP, IHC
Reactivity	Human, Mouse, Rat

Package
50 µg

Applications

Application Note

*Optimal dilutions/concentrations should be determined by the researcher.

Suggested dilution	Recommended dilution
WB	2-4 µg/ml
ICC/IF	2 µg/ml
IHC-Fr	Assay dependent
FCM	3-5 µg/10 ⁶ cells
IP	Assay dependent
IHC	Assay dependent

Not tested in other applications.

Calculated MW 43 kDa. ([Note](#))

Product Note This antibody shows no cross-reactivity to S1P3. Immunofluorescence data demonstrates that S1P1 is localized to the plasma membrane.

Properties

Form	Liquid
Buffer	PBS, 0.1% BSA
Preservative	0.05% Sodium azide
Storage	Store as concentrated solution. Centrifuge briefly prior to opening vial. For short-term storage (1-2 weeks), store at 4°C. For long-term storage, aliquot and store at -20°C or below. Avoid multiple freeze-thaw cycles.
Concentration	1 mg/ml (Please refer to the vial label for the specific concentration.)
Immunogen	Synthetic peptide corresponding to residues S(359) H P Q K D D G D N P E T I(372) of mouse S1P1.
Purification	Purified by antigen-affinity chromatography



For full product information, images and publications, please visit our [website](#).

Conjugation

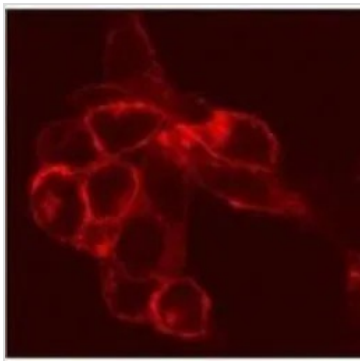
Unconjugated

Note

For laboratory research use only. Not for any clinical, therapeutic, or diagnostic use in humans or animals. Not for animal or human consumption.

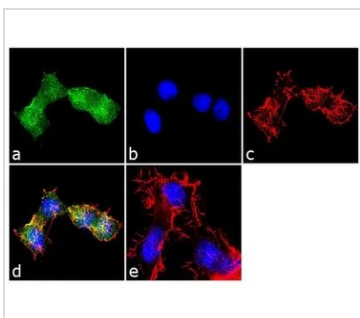
Purchasers shall not, and agree not to enable third parties to, analyze, copy, reverse engineer or otherwise attempt to determine the structure or sequence of the product.

DATA IMAGES



GTX11424 ICC/IF Image

ICC/IF analysis of S1P1 transfected CCL39 cells using GTX11424 EDG1 antibody.



GTX11424 ICC/IF Image

ICC/IF analysis of Neuro-2a cells using GTX11424 EDG1 antibody. Panel e is a no primary antibody control.

Green : Primary antibody

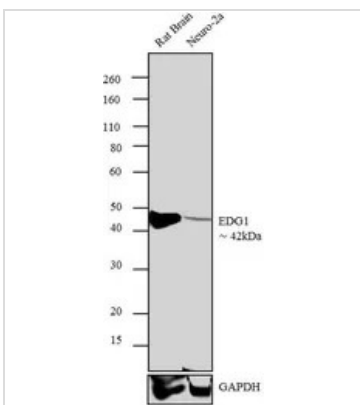
Blue : Nuclei

Red : Actin

Fixation : 4% paraformaldehyde

Permeabilization : 0.1% Trito X-100 for 10 minutes

Dilution : 2 µg/ml in 0.1% BSA and incubated for 3 hours at room temperature



GTX11424 WB Image

WB analysis of rat Brain (Lane 1) and Neuro- 2a (Lane 2) lysate using GTX11424 EDG1 antibody.

Dilution : 2 µg/ml



For full product information, images and publications, please visit our [website](#).