

SNTB2 antibody [1351]

Cat. No. GTX11425

| | |
|--------------|---|
| Host | Mouse |
| Clonality | Monoclonal |
| Isotype | IgG1 |
| Applications | WB, ICC/IF, IHC-Fr, FCM, IP, IHC |
| Reactivity | Human, Mouse, Rat, Dog, Chicken, Amphibians |

Package

50 µg

Applications

Application Note

*Optimal dilutions/concentrations should be determined by the researcher.

| Suggested dilution | Recommended dilution |
|--------------------|-----------------------------|
| WB | 0.1-1 µg/ml |
| ICC/IF | 1-2 µg/ml |
| IHC-Fr | Assay dependent |
| FCM | 0.5µg/10 ⁶ cells |
| IP | Assay dependent |
| IHC | Assay dependent |

Not tested in other applications.

Calculated MW 58 kDa. ([Note](#))

Product Note This antibody detects alpha 1, beta 1 and beta 2 subunits of syntrophin. Characterization studies of this antibody have demonstrated that clone 1351 is directed against an epitope within the PDZ domain of syntrophin.

Properties

| | |
|---------------|--|
| Form | Liquid |
| Buffer | PBS, 0.1% BSA |
| Preservative | 0.05% Sodium azide |
| Storage | Store as concentrated solution. Centrifuge briefly prior to opening vial. For short-term storage (1-2 weeks), store at 4°C. For long-term storage, aliquot and store at -20°C or below. Avoid multiple freeze-thaw cycles. |
| Concentration | 1 mg/ml (Please refer to the vial label for the specific concentration.) |
| Immunogen | Whole purified syntrophin from Torpedo californica electric organ postsynaptic membrane. |
| Purification | Protein G purified |



For full product information, images and publications, please visit our [website](#).

Conjugation

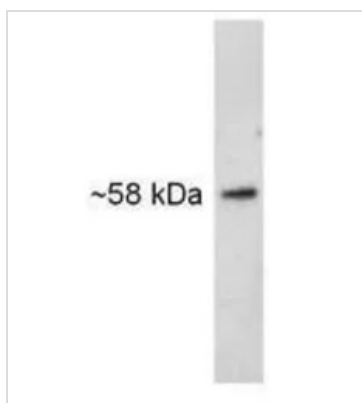
Unconjugated

Note

For laboratory research use only. Not for any clinical, therapeutic, or diagnostic use in humans or animals. Not for animal or human consumption.

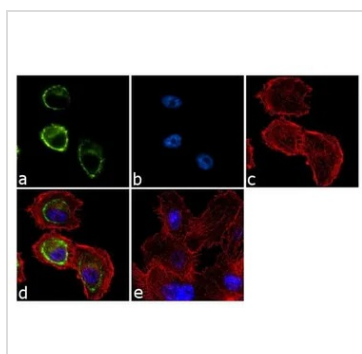
Purchasers shall not, and agree not to enable third parties to, analyze, copy, reverse engineer or otherwise attempt to determine the structure or sequence of the product.

DATA IMAGES



GTx11425 WB Image

WB analysis of canine lysate using GTx11425 SNTB2 antibody [1351].



GTx11425 ICC/IF Image

ICC/IF analysis of PC-3 cells using GTx11425 SNTB2 antibody [1351]. Panel e is a no primary antibody control.

Green : Primary antibody

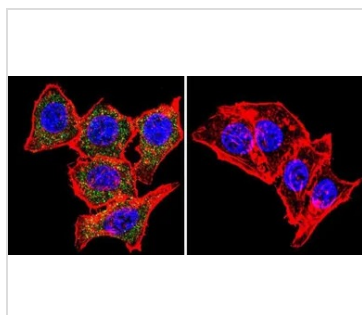
Blue : Nuclei

Red : Actin

Fixation : 4% paraformaldehyde

Permeabilization : 0.1% Triton X-100 for 10 minutes

Dilution : 2 µg/ml in 0.1% BSA and incubated for 3 hours at room temperature



GTx11425 ICC/IF Image

ICC/IF analysis of HeLa cells using GTx11425 SNTB2 antibody [1351]. Cells were probed without (right) or with (left) an antibody.

Green : Primary antibody

Blue : Nuclei

Red : Actin

Fixation : formaldehyde

Dilution : 1:20 overnight at 4°C



For full product information, images and publications, please visit our [website](https://www.genetex.com).