

## ALDH7A1 antibody [C1C3]

Cat. No. GTX114274

Host	Rabbit
Clonality	Polyclonal
Isotype	IgG
Applications	WB, ICC/IF, IHC-P
Reactivity	Human, Mouse, Rat, Zebrafish

Package  
100 µl, 25 µl

## Applications

## Application Note

\*Optimal dilutions/concentrations should be determined by the researcher.

Suggested dilution	Recommended dilution
WB	1:500-1:10000
ICC/IF	1:100-1:1000
IHC-P	1:100-1:1000

Not tested in other applications.

Calculated MW 58 kDa. ( [Note](#) )

## Properties

Form	Liquid
Buffer	0.1M Tris, 0.1M Glycine, 20% Glycerol
Preservative	0.01% Thimerosal
Storage	Store as concentrated solution. Centrifuge briefly prior to opening vial. For short-term storage (1-2 weeks), store at 4°C. For long-term storage, aliquot and store at -20°C or below. Avoid multiple freeze-thaw cycles.
Concentration	0.98 mg/ml (Please refer to the vial label for the specific concentration.)
Immunogen	Recombinant protein encompassing a sequence within the center region of human ALDH7A1. The exact sequence is proprietary.
Purification	Purified by antigen-affinity chromatography.
Conjugation	Unconjugated

## Note

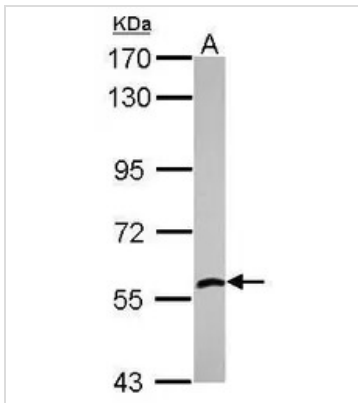
For laboratory research use only. Not for any clinical, therapeutic, or diagnostic use in humans or animals. Not for animal or human consumption.

Purchasers shall not, and agree not to enable third parties to, analyze, copy, reverse engineer or otherwise attempt to determine the structure or sequence of the product.



For full product information, images and publications, please visit our [website](#).

## DATA IMAGES



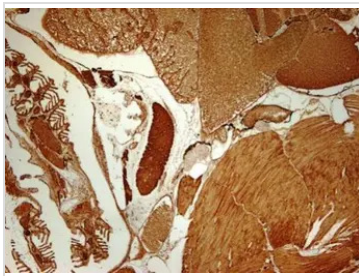
### GTX114274 WB Image

Sample (30 µg of whole cell lysate)

A: zebrafish eye

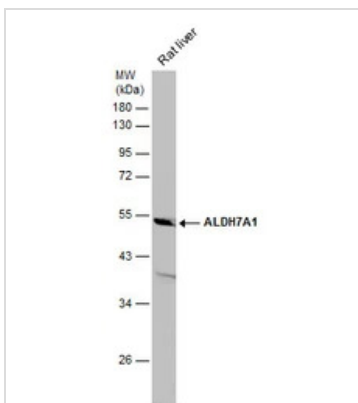
7.5% SDS PAGE

GTX114274 diluted at 1:1000



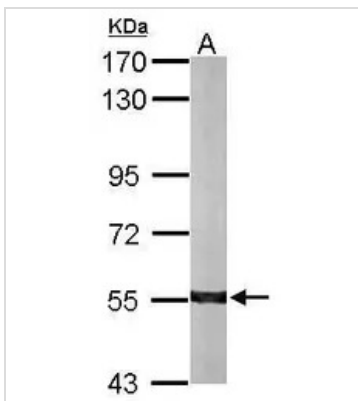
### GTX114274 IHC-P Image

Immunohistochemical analysis of paraffin-embedded zebrafish tissue, using ALDH7A1 antibody [C1C3] (GTX114274) at 1:300 dilution.



### GTX114274 WB Image

Rat tissue extract (50 µg) was separated by 10% SDS-PAGE, and the membrane was blotted with ALDH7A1 antibody [C1C3] (GTX114274) diluted at 1:3000.



### GTX114274 WB Image

Sample (50 µg of whole cell lysate)

A: mouse liver

7.5% SDS PAGE

GTX114274 diluted at 1:10000



For full product information, images and publications, please visit our [website](https://www.genetex.com).