

ATP synthase gamma antibody

Cat. No. GTX114275

Host	Rabbit
Clonality	Polyclonal
Isotype	IgG
Application	WB, IHC-P, IP
Reactivity	Human, Mouse, Rat, Zebrafish

Reference (3)
Package
100 µl, 25 µl

APPLICATION

Application Note

*Optimal dilutions/concentrations should be determined by the researcher.

Suggested dilution	Recommended dilution
WB	1:1000-1:10000
IHC-P	1:100-1:1000
IP	Assay dependent

Not tested in other applications.

Calculated MW 33 kDa. ([Note](#))

Product Note Knockdown/Knockout validation was supported by references (PMID:26990993)

PROPERTIES

Form	Liquid
Buffer	0.1M Tris, 0.1M Glycine, 20% Glycerol
Preservative	0.01% Thimerosal
Storage	Store as concentrated solution. Centrifuge briefly prior to opening vial. For short-term storage (1-2 weeks), store at 4°C. For long-term storage, aliquot and store at -20°C or below. Avoid multiple freeze-thaw cycles.
Concentration	0.44 mg/ml (Please refer to the vial label for the specific concentration.)
Immunogen	Recombinant protein encompassing a sequence within the center region of human ATP synthase gamma. The exact sequence is proprietary.
Purification	Purified by antigen-affinity chromatography.
Conjugation	Unconjugated



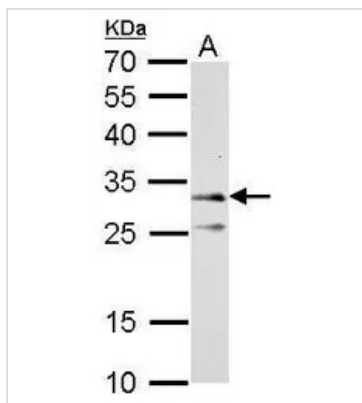
For full product information, images and publications, please visit our [website](#).

For laboratory research use only. Not for any clinical, therapeutic, or diagnostic use in humans or animals. Not for animal or human consumption.

Note

Purchasers shall not, and agree not to enable third parties to, analyze, copy, reverse engineer or otherwise attempt to determine the structure or sequence of the product.

DATA IMAGES



GTx114275 WB Image

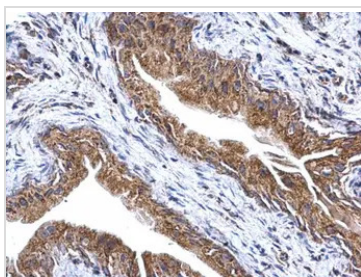
ATP synthase gamma antibody detects ATP5C1 protein by western blot analysis.

A. 50 µg rat kidney lysate/extract

12% SDS-PAGE

ATP synthase gamma antibody (GTx114275) dilution: 1:5000

The HRP-conjugated anti-rabbit IgG antibody (GTx213110-01) was used to detect the primary antibody.



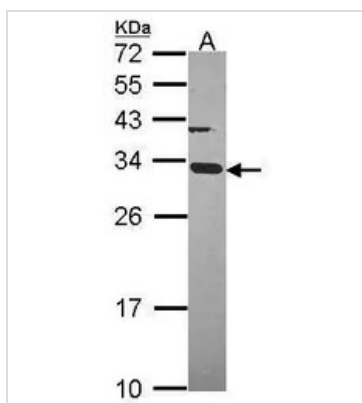
GTx114275 IHC-P Image

ATP synthase gamma antibody detects ATP synthase gamma protein at mitochondria on mouse cervix by immunohistochemical analysis.

Sample: Paraffin-embedded mouse cervix.

ATP synthase gamma antibody (GTx114275) dilution: 1:500.

Antigen Retrieval: Trilogy™ (EDTA based, pH 8.0) buffer, 15min



GTx114275 WB Image

Sample (30 µg of whole cell lysate)

A: HeLa

12% SDS PAGE

ATP synthase gamma(mitochondrial) antibody

GTx114275 diluted at 1:1000

The HRP-conjugated anti-rabbit IgG antibody (GTx213110-01) was used to detect the primary antibody.



For full product information, images and publications, please visit our [website](https://www.genetex.com).