

## S100 alpha antibody

Cat. No. GTX11428

Host	Rabbit
Clonality	Polyclonal
Isotype	IgG
Applications	WB, ICC/IF, IHC-P, IP, ELISA
Reactivity	Human, Mouse, Rat, Bovine, Pig

References ( 1 )

Package

50 µg

## Applications

## Application Note

\*Optimal dilutions/concentrations should be determined by the researcher.

Suggested dilution	Recommended dilution
WB	0.1 µg/ml
ICC/IF	1:50-1:200
IHC-P	1 µg/ml
IP	5 µg/ml
ELISA	Assay dependent

**Note : S100 protein is relatively small and, therefore, it is recommended that the electrophoresis be performed using tricine-SDS-PAGE gels and transferred to a nylon membrane.**

Not tested in other applications.

Calculated MW	11 kDa. ( <a href="#">Note</a> )
Product Note	This antibody has shown no cross-reactivity with the S100-beta protein. Immunohistochemical staining on paraffin sections demonstrates that S100-alpha is localized in serous cells, myoepithelial cells and epithelial cells of intercalated ducts in the parotid gland.

## Properties

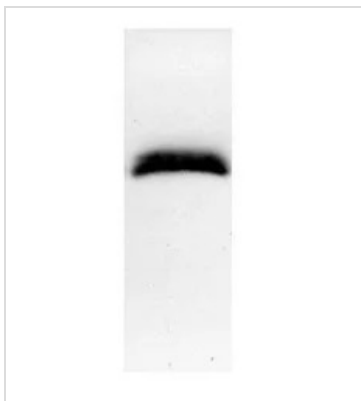
Form	Liquid
Buffer	PBS, 1.5% BSA
Preservative	0.05% Sodium azide
Storage	Store as concentrated solution. Centrifuge briefly prior to opening vial. For short-term storage (1-2 weeks), store at 4°C. For long-term storage, aliquot and store at -20°C or below. Avoid multiple freeze-thaw cycles.
Concentration	Batch dependent (Please refer to the vial label for the specific concentration.)
Immunogen	Purified S100-alpha protein from human pectoral muscle cells.



For full product information, images and publications, please visit our [website](#).

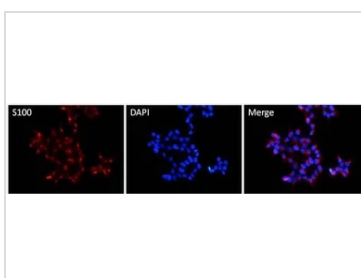
<b>Purification</b>	Purified by antigen-affinity chromatography
<b>Conjugation</b>	Unconjugated
<b>Note</b>	<p>For laboratory research use only. Not for any clinical, therapeutic, or diagnostic use in humans or animals. Not for animal or human consumption.</p> <p>Purchasers shall not, and agree not to enable third parties to, analyze, copy, reverse engineer or otherwise attempt to determine the structure or sequence of the product.</p>

## DATA IMAGES



### GTx11428 WB Image

WB analysis of human muscle extract using GTx11428 S100 alpha antibody.



### GTx11428 ICC/IF Image

ICC/IF analysis of HEK293T cells using GTx11428 S100 alpha antibody.

Fixation : formaldehyde

Permeabilization : 0.3% Triton X-100 for 60 minutes

Dilution : 1:100 overnight at 4 °C



For full product information, images and publications, please visit our [website](#).