

C3a Receptor antibody

Cat. No. GTX114293

Host	Rabbit
Clonality	Polyclonal
Isotype	IgG
Applications	WB, IHC-Fr
Reactivity	Human, Rat

References (2)

Package

100 µl, 25 µl

Applications

Application Note

*Optimal dilutions/concentrations should be determined by the researcher.

Suggested dilution	Recommended dilution
WB	1:500-1:3000
IHC-Fr	Assay dependent

Not tested in other applications.

Calculated MW 54 kDa. ([Note](#))

Properties

Form	Liquid
Buffer	PBS, 20% Glycerol
Preservative	0.025% ProClin 300
Storage	Store as concentrated solution. Centrifuge briefly prior to opening vial. For short-term storage (1-2 weeks), store at 4°C. For long-term storage, aliquot and store at -20°C or below. Avoid multiple freeze-thaw cycles.
Concentration	1.18 mg/ml (Please refer to the vial label for the specific concentration.)
Immunogen	Recombinant protein encompassing a sequence within the center region of human C3a receptor 1. The exact sequence is proprietary.
Purification	Purified by antigen-affinity chromatography.
Conjugation	Unconjugated

Note

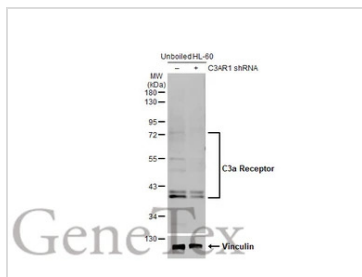
For laboratory research use only. Not for any clinical, therapeutic, or diagnostic use in humans or animals. Not for animal or human consumption.

Purchasers shall not, and agree not to enable third parties to, analyze, copy, reverse engineer or otherwise attempt to determine the structure or sequence of the product.



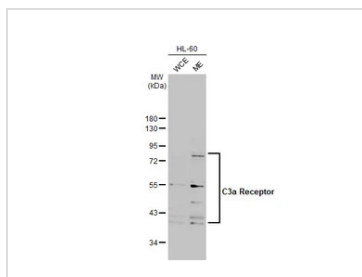
For full product information, images and publications, please visit our [website](#).

DATA IMAGES



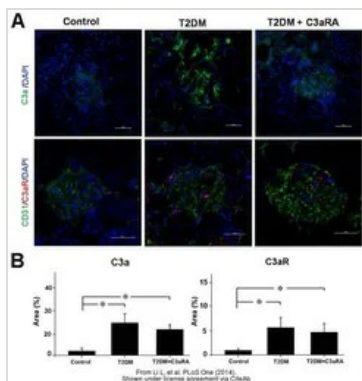
GTX114293 WB Image

Non-transfected (–) and transfected (+) unboiled HL-60 whole cell extracts (30 µg) were separated by 10% SDS-PAGE, and the membrane was blotted with C3a Receptor antibody (GTX114293) diluted at 1:500. The HRP-conjugated anti-rabbit IgG antibody (GTX213110-01) was used to detect the primary antibody, and the signal was developed with Trident ECL plus-Enhanced.



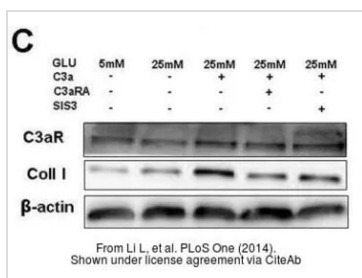
GTX114293 WB Image

Boiled HL-60 whole cell and membrane extracts (30 µg) were separated by 10% SDS-PAGE, and the membrane was blotted with C3a Receptor antibody (GTX114293) diluted at 1:500. The HRP-conjugated anti-rabbit IgG antibody (GTX213110-01) was used to detect the primary antibody. The observed M.W. is based on the publication: PMID: 12871936



GTX114293 IHC-Fr Image

The data was published in the journal PLoS One in 2014. [PMID: 25422985](https://pubmed.ncbi.nlm.nih.gov/25422985/)



GTX114293 WB Image

The data was published in the journal PLoS One in 2014. [PMID: 25422985](https://pubmed.ncbi.nlm.nih.gov/25422985/)



For full product information, images and publications, please visit our [website](https://www.genetex.com).