

Centrin 1 antibody [N1C3]

Cat. No. GTX114316

Host	Rabbit
Clonality	Polyclonal
Isotype	IgG
Applications	WB, ICC/IF, IHC-P, IP
Reactivity	Human, Bovine

References (1)

★★★★★ Review (1)

Package

100 µl, 25 µl

Applications

Application Note

*Optimal dilutions/concentrations should be determined by the researcher.

Suggested dilution	Recommended dilution
WB	1:500-1:3000
ICC/IF	1:100-1:1000
IHC-P	Assay dependent
IP	1:100-1:500

Not tested in other applications.

Calculated MW 20 kDa. ([Note](#))

Properties

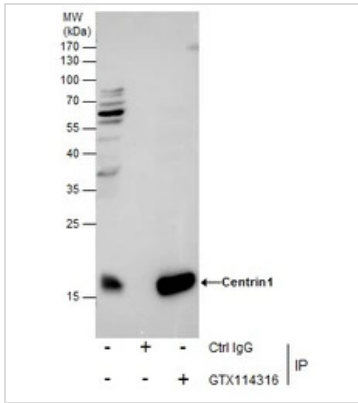
Form	Liquid
Buffer	0.1M Tris, 0.1M Glycine, 20% Glycerol
Preservative	0.01% Thimerosal
Storage	Store as concentrated solution. Centrifuge briefly prior to opening vial. For short-term storage (1-2 weeks), store at 4°C. For long-term storage, aliquot and store at -20°C or below. Avoid multiple freeze-thaw cycles.
Concentration	1 mg/ml (Please refer to the vial label for the specific concentration.)
Immunogen	Recombinant protein encompassing a sequence within the center region of human Centrin 1. The exact sequence is proprietary.
Purification	Purified by antigen-affinity chromatography.
Conjugation	Unconjugated

For full product information, images and publications, please visit our [website](#).

For laboratory research use only. Not for any clinical, therapeutic, or diagnostic use in humans or animals. Not for animal or human consumption.

Note

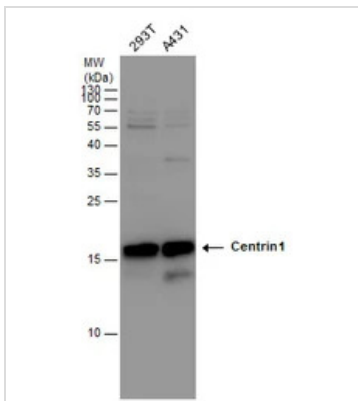
Purchasers shall not, and agree not to enable third parties to, analyze, copy, reverse engineer or otherwise attempt to determine the structure or sequence of the product.

DATA IMAGES

GTX114316 IP Image

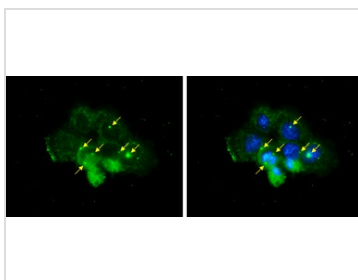
Immunoprecipitation of Centrin-1 protein from 293T whole cell extracts using 5 µg of Centrin-1 antibody [N1C3] (GTX114316).

Western blot analysis was performed using Centrin-1 antibody [N1C3] (GTX114316) diluted at 1:500.

EasyBlot anti-Rabbit IgG (GTX221666-01) was used as a secondary reagent.


GTX114316 WB Image

Centrin 1 antibody detects Centrin 1 protein by western blot analysis. Various whole cell extracts (30 µg) were separated by 15% SDS-PAGE, and the membrane was blotted with Centrin 1 antibody (GTX114316) diluted at a dilution of 1:1000.


GTX114316 ICC/IF Image

Centrin 1 antibody [N1C3] detects Centrin 1 protein at centrosome by immunofluorescent analysis.

Sample: A431 cells were fixed in ice-cold MeOH for 5 min.

Green: Centrin 1 stained by Centrin 1 antibody [N1C3] (GTX114316) diluted at 1:500.

Blue: Hoechst 33342 staining.



For full product information, images and publications, please visit our [website](https://www.genetex.com).