

# Carboxypeptidase B antibody [N3C3]

**Cat. No. GTX114334**

<b>Host</b>	Rabbit
<b>Clonality</b>	Polyclonal
<b>Isotype</b>	IgG
<b>Applications</b>	WB, IHC-P
<b>Reactivity</b>	Human, Mouse, Rat

**Package**  
100 µl, 25 µl

## Applications

### Application Note

\*Optimal dilutions/concentrations should be determined by the researcher.

Suggested dilution	Recommended dilution
WB	1:1000-1:10000
IHC-P	1:100-1:1000

Not tested in other applications.

**Calculated MW** 47 kDa. ( [Note](#) )

## Properties

<b>Form</b>	Liquid
<b>Buffer</b>	PBS, 20% Glycerol
<b>Preservative</b>	0.025% ProClin 300
<b>Storage</b>	Store as concentrated solution. Centrifuge briefly prior to opening vial. For short-term storage (1-2 weeks), store at 4°C. For long-term storage, aliquot and store at -20°C or below. Avoid multiple freeze-thaw cycles.
<b>Concentration</b>	2.74 mg/ml (Please refer to the vial label for the specific concentration.)
<b>Immunogen</b>	Recombinant protein encompassing a sequence within the center region of human Carboxypeptidase B. The exact sequence is proprietary.
<b>Purification</b>	Purified by antigen-affinity chromatography.
<b>Conjugation</b>	Unconjugated

**Note**

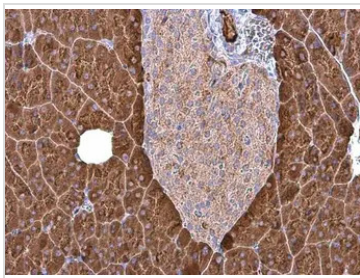
For laboratory research use only. Not for any clinical, therapeutic, or diagnostic use in humans or animals. Not for animal or human consumption.

Purchasers shall not, and agree not to enable third parties to, analyze, copy, reverse engineer or otherwise attempt to determine the structure or sequence of the product.



For full product information, images and publications, please visit our [website](#).

## DATA IMAGES

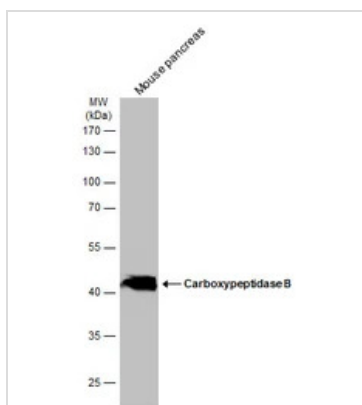
**GTX114334 IHC-P Image**

Carboxypeptidase B antibody [N3C3] detects Carboxypeptidase B protein at cytoplasm in mouse pancreas by immunohistochemical analysis.

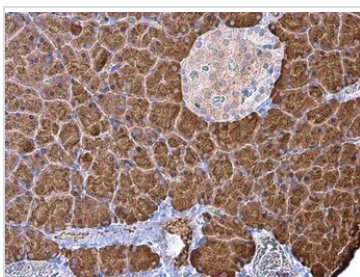
Sample: Paraffin-embedded mouse pancreas.

Carboxypeptidase B antibody [N3C3] (GTX114334) diluted at 1:1000.

Antigen Retrieval: Citrate buffer, pH 6.0, 15 min

**GTX114334 WB Image**

Mouse tissue extract (50 µg) was separated by 10% SDS-PAGE, and the membrane was blotted with Carboxypeptidase B antibody [N3C3] (GTX114334) diluted at 1:50000. The HRP-conjugated anti-rabbit IgG antibody (GTX213110-01) was used to detect the primary antibody.

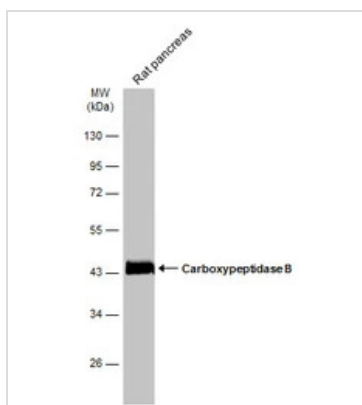
**GTX114334 IHC-P Image**

Carboxypeptidase B antibody [N3C3] detects Carboxypeptidase B protein at cytoplasm in rat pancreas by immunohistochemical analysis.

Sample: Paraffin-embedded rat pancreas.

Carboxypeptidase B antibody [N3C3] (GTX114334) diluted at 1:1000.

Antigen Retrieval: Citrate buffer, pH 6.0, 15 min

**GTX114334 WB Image**

Rat tissue extract (50 µg) was separated by 10% SDS-PAGE, and the membrane was blotted with Carboxypeptidase B antibody [N3C3] (GTX114334) diluted at 1:50000. The HRP-conjugated anti-rabbit IgG antibody (GTX213110-01) was used to detect the primary antibody.



For full product information, images and publications, please visit our [website](https://www.genetex.com).