

## CSRP1 antibody [N1C3]

Cat. No. GTX114344

Host	Rabbit
Clonality	Polyclonal
Isotype	IgG
Applications	WB, IHC-P, IP
Reactivity	Human, Zebrafish

References ( 2 )

Package

100 µl, 25 µl

## Applications

## Application Note

\*Optimal dilutions/concentrations should be determined by the researcher.

Suggested dilution	Recommended dilution
WB	1:500-1:3000
IHC-P	Assay dependent
IP	1:100-1:500

Not tested in other applications.

Calculated MW 21 kDa. ( [Note](#) )

## Properties

Form	Liquid
Buffer	0.1M Tris, 0.1M Glycine, 20% Glycerol
Preservative	0.01% Thimerosal
Storage	Store as concentrated solution. Centrifuge briefly prior to opening vial. For short-term storage (1-2 weeks), store at 4°C. For long-term storage, aliquot and store at -20°C or below. Avoid multiple freeze-thaw cycles.
Concentration	0.84 mg/ml (Please refer to the vial label for the specific concentration.)
Immunogen	Recombinant protein encompassing a sequence within the center region of human CSRP1. The exact sequence is proprietary.
Purification	Purified by antigen-affinity chromatography.
Conjugation	Unconjugated

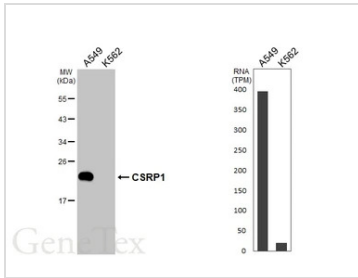
## Note

For laboratory research use only. Not for any clinical, therapeutic, or diagnostic use in humans or animals. Not for animal or human consumption.

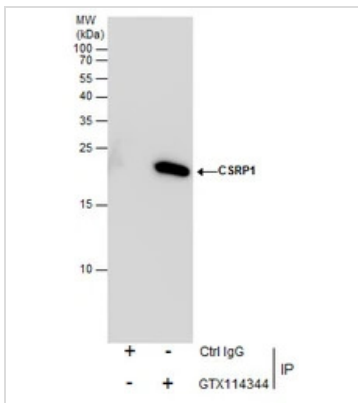
Purchasers shall not, and agree not to enable third parties to, analyze, copy, reverse engineer or otherwise attempt to determine the structure or sequence of the product.



For full product information, images and publications, please visit our [website](#).

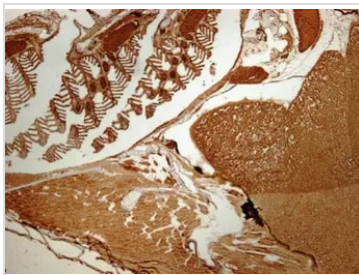
**DATA IMAGES**

**GTK114344 WB Image**

Various whole cell extracts (30 µg) were separated by 12% SDS-PAGE, and the membrane was blotted with CSRP1 antibody [N1C3] (GTK114344) diluted at 1:1000. The HRP-conjugated anti-rabbit IgG antibody (GTK213110-01) was used to detect the primary antibody. Corresponding RNA expression data for the same cell lines are based on Human Protein Atlas program.

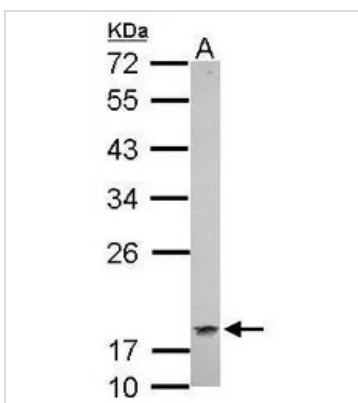

**GTK114344 IP Image**

Immunoprecipitation of CRP1 protein from A549 whole cell extracts using 5 µg of CRP1 antibody [N1C3] (GTK114344).

Western blot analysis was performed using CRP1 antibody [N1C3] (GTK114344) diluted at 1:500. EasyBlot anti-Rabbit IgG (GTK221666-01) was used as a secondary reagent.


**GTK114344 IHC-P Image**

Immunohistochemical analysis of paraffin-embedded zebrafish tissue, using CSRP1 antibody [N1C3] (GTK114344) at 1:300 dilution.


**GTK114344 WB Image**

Sample (30 µg of whole cell lysate)

A: whole zebrafish

12% SDS PAGE

GTK114344 diluted at 1:1000



For full product information, images and publications, please visit our [website](https://www.genetex.com).