

CtBP2 antibody [N1N3]

Cat. No. GTX114346

Host	Rabbit
Clonality	Polyclonal
Isotype	IgG
Applications	WB, ICC/IF, IHC-P
Reactivity	Human

Package
100 µl, 25 µl

Applications

Application Note

*Optimal dilutions/concentrations should be determined by the researcher.

Suggested dilution	Recommended dilution
WB	1:500-1:3000
ICC/IF	1:100-1:1000
IHC-P	1:100-1:1000

Not tested in other applications.

Calculated MW	49 kDa. (Note)
Product Note	Based on sequence homology, this antibody may cross react with CtBP1 protein.

Properties

Form	Liquid
Buffer	0.1M Tris, 0.1M Glycine, 1% BSA, 20% Glycerol
Preservative	0.01% Thimerosal
Storage	Store as concentrated solution. Centrifuge briefly prior to opening vial. For short-term storage (1-2 weeks), store at 4°C. For long-term storage, aliquot and store at -20°C or below. Avoid multiple freeze-thaw cycles.
Concentration	0.25 mg/ml (Please refer to the vial label for the specific concentration.)
Immunogen	Recombinant protein encompassing a sequence within the N-terminus region of human CtBP2. The exact sequence is proprietary.
Purification	Purified by antigen-affinity chromatography.
Conjugation	Unconjugated

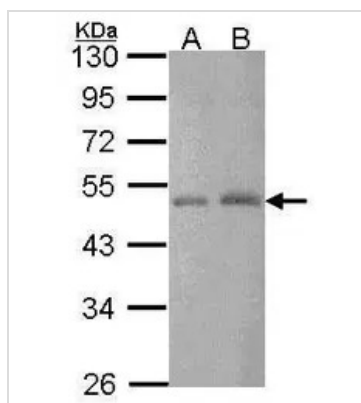


For full product information, images and publications, please visit our [website](#).

For laboratory research use only. Not for any clinical, therapeutic, or diagnostic use in humans or animals. Not for animal or human consumption.

Note

Purchasers shall not, and agree not to enable third parties to, analyze, copy, reverse engineer or otherwise attempt to determine the structure or sequence of the product.

DATA IMAGES

GTx114346 WB Image

Sample (30 ug of whole cell lysate)

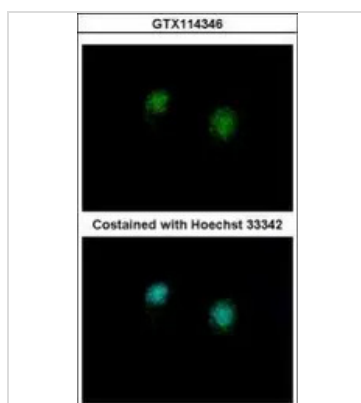
A: Hep G2 (GTx27900)

B: HCT116

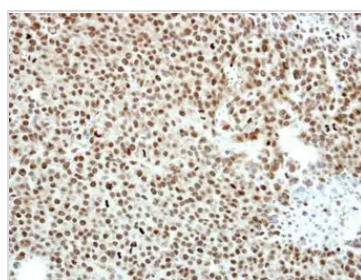
10% SDS PAGE

CTBP2 antibody

GTx114346 diluted at 1:1000


GTx114346 ICC/IF Image

Immunofluorescence analysis of methanol-fixed HeLa, using CtBP2(GTx114346) antibody at 1:500 dilution.


GTx114346 IHC-P Image

Immunohistochemical analysis of paraffin-embedded Huh7 xenograft, using CTBP2(GTx114346) antibody at 1:500 dilution.

Antigen Retrieval: Trilogy™ (EDTA based, pH 8.0) buffer, 15min



For full product information, images and publications, please visit our [website](https://www.genetex.com).