

## PSMA5 antibody

Cat. No. GTX11437

Host	Rabbit
Clonality	Polyclonal
Isotype	IgG
Application	WB, ICC/IF, FACS
Reactivity	Human, Mouse, Rat, Hamster

Package  
50 µg

## APPLICATION

## Application Note

\*Optimal dilutions/concentrations should be determined by the researcher.

Suggested dilution	Recommended dilution
WB	1 - 3 µg/ml
ICC/IF	2 µg/ml
FACS	3-5 µg/10 <sup>6</sup> cells

Not tested in other applications.

Calculated MW 26 kDa. ( [Note](#) )

## PROPERTIES

Form	Liquid
Buffer	PBS, 0.1% BSA
Preservative	0.05% Sodium azide
Storage	Store as concentrated solution. Centrifuge briefly prior to opening vial. For short-term storage (1-2 weeks), store at 4°C. For long-term storage, aliquot and store at -20°C or below. Avoid multiple freeze-thaw cycles.
Concentration	1 mg/ml (Please refer to the vial label for the specific concentration.)
Immunogen	Synthetic peptide corresponding to residues C A(120) L Q F G E E D A D P G A M(133) of human proteasome 20S subunit alpha 5.
Purification	Purified by antigen-affinity chromatography
Conjugation	Unconjugated

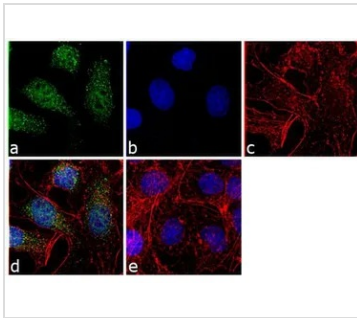
## Note

For laboratory research use only. Not for any clinical, therapeutic, or diagnostic use in humans or animals. Not for animal or human consumption.

Purchasers shall not, and agree not to enable third parties to, analyze, copy, reverse engineer or otherwise attempt to determine the structure or sequence of the product.



For full product information, images and publications, please visit our [website](#).

**DATA IMAGES**

**GTX11437 ICC/IF Image**

ICC/IF analysis of HepG2 cells using GTX11437 PSMA5 antibody. Panel e is a no primary antibody control.

Green : Primary antibody

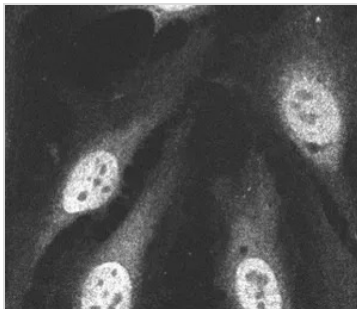
Blue : Nuclei

Red : Actin

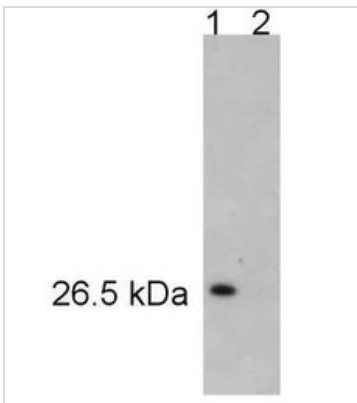
Fixation : 4% paraformaldehyde

Permeabilization : 0.1% Triton X-100 for 10 minutes

Dilution : 2 µg/ml in 0.1% BSA and incubated for 3 hours at room temperature


**GTX11437 ICC/IF Image**

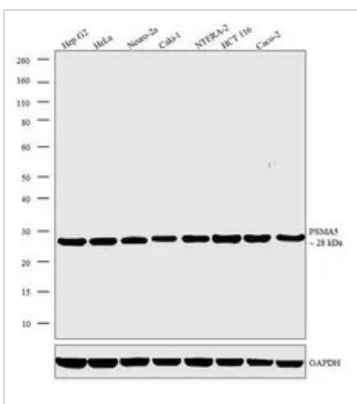
ICC/IF analysis of HeLa cells using GTX11437 PSMA5 antibody.


**GTX11437 WB Image**

WB analysis of HeLa cell extract using GTX11437 PSMA5 antibody.

Lane 1 : Primary antibody

Lane 2 : Primary antibody pre-incubated with peptide


**GTX11437 WB Image**

WB analysis of whole cell extracts (30 µg lysate) of Hep G2 (Lane 1), HeLa (Lane 2), Neuro-2a (Lane 3), Caki-1 (Lane 4), NTERA-2 (Lane 5), HCT 116 (Lane 6), Caco-2 (Lane 7), and tissue extract (30 µg lysate) of Mouse Liver (Lane 8) using GTX11437 PSMA5 antibody.

Dilution : 1 µg/ml



For full product information, images and publications, please visit our [website](https://www.genetex.com).