

DTYMK antibody

Cat. No. GTX114371

Host	Rabbit
Clonality	Polyclonal
Isotype	IgG
Application	WB, IP
Reactivity	Human

Package
100 µl, 25 µl

APPLICATION

Application Note

*Optimal dilutions/concentrations should be determined by the researcher.

Suggested dilution	Recommended dilution
WB	1:500-1:3000
IP	1:100-1:500

Not tested in other applications.

Calculated MW 24 kDa. ([Note](#))

PROPERTIES

Form	Liquid
Buffer	0.1M Tris, 0.1M Glycine, 20% Glycerol
Preservative	0.01% Thimerosal
Storage	Store as concentrated solution. Centrifuge briefly prior to opening vial. For short-term storage (1-2 weeks), store at 4°C. For long-term storage, aliquot and store at -20°C or below. Avoid multiple freeze-thaw cycles.
Concentration	1 mg/ml (Please refer to the vial label for the specific concentration.)
Immunogen	Recombinant protein encompassing a sequence within the center region of human DTYMK. The exact sequence is proprietary.
Purification	Purified by antigen-affinity chromatography.
Conjugation	Unconjugated

Note

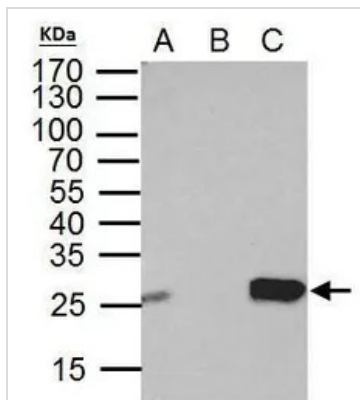
For laboratory research use only. Not for any clinical, therapeutic, or diagnostic use in humans or animals. Not for animal or human consumption.

Purchasers shall not, and agree not to enable third parties to, analyze, copy, reverse engineer or otherwise attempt to determine the structure or sequence of the product.



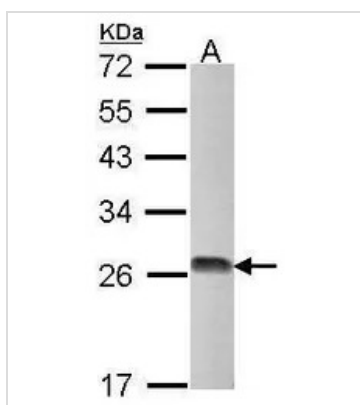
For full product information, images and publications, please visit our [website](#).

DATA IMAGES



GTX114371 IP Image

Thymidylate kinase antibody immunoprecipitates Thymidylate kinase protein in IP experiments. IP Sample: HeLa whole cell lysate/extract A. 40 μ g HeLa whole cell lysate/extract B. Control with 2 μ g of preimmune rabbit IgG C. Immunoprecipitation of Thymidylate kinase protein by 2 μ g of Thymidylate kinase antibody (GTX114371) 10% SDS-PAGE The immunoprecipitated Thymidylate kinase protein was detected by Thymidylate kinase antibody (GTX114371) diluted at 1:1000. EasyBlot anti-rabbit IgG (GTX221666-01) was used as a secondary reagent.



GTX114371 WB Image

Sample (30 μ g of whole cell lysate)
A: Raji
12% SDS PAGE
Thymidylate kinase antibody
GTX114371 diluted at 1:1000



For full product information, images and publications, please visit our [website](https://www.genetex.com).